



COSTA NOVA

PORTUGAL



R E T A I L C A T A L O G 2 0 2 4

C O S T A N O V A

R E T A I L C A T A L O G 2 0 2 4



Our love for life, family, friends,
and healthy food has inspired
us to create fine stoneware
collections that combine
quality and design with the
best in ceramic craftsmanship.
We produce innovative and
sustainable stoneware made
from the best natural resources
in Portugal. We embrace
handmade and preserve
our European heritage in
manufacturing our
stoneware collections.

06 MANIFESTO

Embracing handmade, using the best natural resources

08 SUSTAINABILITY

Ethically handcrafted collections

08 SUSTAINABLE CHOICE

14 ECOGRES

16 STONEWARE

Sustainable aesthetics

22 ALENTEJO

26 APARTE

32 ARENITO

NEW | SANDECOGRES

36 AUGUSTA

40 BEJA

46 BRISA

52 CRISTAL

54 ELEMENTS

60 FESTA

ECOGRES

66 FRISO

74 LAGOA

80 LAGOA ECOGRES

ECOGRES

86 LATTE BOWLS

88 LISBOA

92 LIVIA

98 LUZIA

104 MADEIRA

114 MARRAKESH

NEW | SANDECOGRES

126 NÓTOS

132 NOVA

138 OUR COFFEE STORY

160 PEARL

166 PLANO

ECOGRES

172 REDONDA

178 RIVIERA

186 RODA

192 ROSA

196 STACKED ORGANIC

NEW | ECOGRES

206 FLATWARE

High-quality stainless steel, made in Portugal

210	ANTIGO
212	CHEESE & STEAK KNIVES
214	LUMI
216	MITO
218	NAU
220	PICO
222	PRADO
224	SAGA

226 GLASSWARE

Uniqueness and high-quality craftsmanship

230	RECYCLED GLASSWARE
232	MOUTH-BLOWN HANDMADE GLASSWARE
236	MACHINE-MADE GLASSWARE

240 TABLE LINENS

Delicately curated, our table linens are designed to infuse both style and distinctive charm into your dining space

244	BELLA
244	CARMO
246	CASCATA
246	DENIM
248	LUISA
250	MARIA

254 TABLE DECOR

A curated selection of authentic table and home decoration accessories

258	LEATHER
260	NAPKIN RINGS
262	PLACEMATS

264 HOME

Elevate your decor with pieces that make a difference, adding a touch of individuality to your space

268	DECORATIVE
274	BATH

278 INFO

Find out more about our products

278	USE & CARE
282	FLATWARE DIMENSIONS CHART
285	INSTRUCTION GUIDE
285	B2B PLATFORM



Above: New Sand Ecogres collection — Marrakesh.

INSPIRATION AND DESIGN FOR YOUR TABLE

The love of life, family, friends and healthy food has inspired Costa Nova to create fine stoneware collections that combine quality and design with the best in ceramic craftsmanship.

The brand produces innovative and sustainable stoneware, made from the best natural resources in Portugal.

We embrace “handmade” and preserve our European heritage in the manufacture of our stoneware collections, bringing to the table and to the home unique and elegant pieces that suit perfectly in today’s way of living and are able to last for generations.

Costa Nova was born in a small Portuguese fishing village, near the Atlantic Ocean. Nowadays, carrying Portugal’s name and heritage all over the world Costa Nova is present across the 5 continents, in prestigious department stores and boutiques, hotels and renowned restaurants.

Celebrar a vida, através da partilha de momentos à mesa com a família e amigos, serve de inspiração à Costa Nova.

A marca cria coleções de mesa em grés fino, aliando qualidade e design à melhor tradição europeia de fabrico cerâmico. Os produtos em grés da Costa Nova são inovadores e sustentáveis, produzidos a partir dos melhores recursos naturais em Portugal. Preservamos este trabalho artesanal no fabrico de cada uma das nossas coleções, levando para a mesa peças únicas e elegantes que se adaptam perfeitamente ao estilo de vida atual e perduram durante várias gerações.

A Costa Nova leva hoje o nome e a herança de Portugal a todo o mundo, com presença nos cinco continentes nas mais prestigiadas lojas de decoração e grandes armazéns e, também, em conceituados hotéis e restaurantes.

A SUSTAINABLE CHOICE

Your eco-conscious choice, our sustainability mission

At Costa Nova we create unique and sustainable stoneware collections made from the best local clays. We pair them with thoughtful collections of flatware, glassware, table linens, and other natural materials such as cork, wood, and leather, manufactured in Europe with the best expertise and resources. Our choice of materials translates our commitment and aesthetics on bringing unique and elegant alternatives to the table and the home while respecting Nature.

Na Costa Nova criamos coleções únicas e sustentáveis em grés fino a partir das melhores matérias-primas locais. Combinamo-las com coleções selecionadas de cutelarias, copos, têxteis de mesa e outras matérias-primas como a cortiça, a madeira e a pele, todas manufaturadas em Portugal e na Europa com os melhores recursos e know-how. A escolha destes materiais traduz o nosso conceito e compromisso em trazer para a mesa e para a casa propostas únicas e elegantes, enquanto respeitamos o Ambiente.





Sustainable stoneware, Sustainable industry

At Costa Nova we are committed to making stoneware more sustainable. Our products are guaranteed to be eco-friendly, reusable, and recyclable. They are crafted with non-toxic, lead-free materials.

We manufacture in Portugal, using the best local natural resources, which minimizes our ecological footprint. Our single-fired production saves energy and reduces emissions into the atmosphere. We save water, carefully treating and reusing it for internal cleaning processes or reintroducing it in our production processes. In addition, we reuse the heat from our kilns to other equipment.

Our original formula results in a unique ceramic body with a special bonding between the clay and the glazed surface, making our products more durable – as they are resistant to both thermal and mechanical shocks. This means our stoneware doesn't chip or scratch easily, and it can withstand high temperatures. It also means it has a longer lifespan, compared to more fragile ceramics, reducing the frequency of replacement and the associated resource consumption.

Eco-design Our designers play a pivotal role in promoting sustainability in stoneware manufacturing.

We are limiting the environmental impact of our products by carefully considering aspects such as form, ergonomics, aesthetics, quality, production costs, distribution, usability, and the product's life cycle.

As a result, all our stoneware products are manufactured efficiently, optimizing resource usage (clay, glazes, energy, and water) to minimize waste during production. They are guaranteed to be eco-friendly, reusable, and recyclable.

Energy efficiency Costa Nova has pledged to power its global infrastructure with 100% renewable energy and has made significant investments in renewable energy projects. We utilize 1180 kW of solar panels to harness the energy of the sun. Our four factories operate on our self-generated solar power, being powered by a combination of our solar panels and green energy sources, which are derived from renewable sources of energy.

Our single-fired production reduces the energy consumption and emissions into the atmosphere (single-firing uses 50%-70% less energy than the standard double-firing system). We reuse heat from the kilns to enhance the efficiency of the equipment, but also in a closed circuit, making them 15% more efficient than the most energy-efficient kilns in the market.

Waste management The waste we generate is mindfully managed. 99% of our waste is sent for recycling or valorization processes, becoming by-products incorporated into other industries.

We recycle in our own facilities our factory's excess clay into brand new dinnerware, limiting transport emissions.

We've developed Ecogres, a new raw material created by collecting, recycling, and repurposing clays and glazes from our own processes, as well as other waste materials from neighboring industries.

Water treatment In addition to our reducing consumption practices, 100% of our water is carefully treated and reused for internal cleaning processes or reintroduced in our production process.

Each one of our four factories is equipped with an industrial wastewater treatment plant.





Packaging Everything we use to pack our products is recycled and recyclable. Our packaging is 100% plastic-free and dyed with nonhazardous dyes.

In our journey to find new and sustainable alternatives to plastic filling, we developed a new sub-product called Ecocard. Ecocard is made of crushed internal cardboard waste and used to fill our boxes. In addition, all our boxes are FCS certified (75% recycled cardboard), sealed with recycled paper tape, and reusable and recyclable.

Ethical business practices Costa Nova is committed to maintaining high ethical standards in its business operations, including transparency, fair treatment of employees, and adherence to laws and regulations.

Here are some of our major concerns regarding our employees and community:

We prioritize a positive work environment based on trust, ethics, and respect for human rights. We invest in continuous employee training and ensure safe working conditions.

We strive for diversity, gender equality, and non-discrimination in our workforce. We employ a workforce of over 1,000 individuals from 14 nationalities across our four factories, with women making up 70% of our staff.

We actively engage with and support local institutions, contributing to social progress.

We annually donate products to nearly 100 associations for fundraising and promote internal solidarity campaigns.





ECOGRES®

From the earth, for the Earth

Costa Nova focuses on researching and developing sustainable products and manufacturing technologies.

In this commitment to creating solutions that contribute to a more sustainable future, Costa Nova has developed a new raw material, by collecting, recycling, and reusing clays and glazes from its own operations, as well as other waste materials from neighboring industries. The result is Ecogres®, a completely eco-friendly, reinvented clay made of recycled materials. In 2023, with a focus on reducing the environmental impact of tableware production,

Costa Nova opened the Ecogres factory in Aveiro, Portugal. Considered a factory ahead of all ceramic factories, Ecogres presents one of the world's most advanced energy-efficient industrial facilities.

Our Ecogres collections take sustainability to their highest level, telling a unique story of how tableware can be made of recycled materials while remaining beautiful, durable, and functional at the same time.

All collections that are made of Ecogres are highlighted on the Index page and labeled with our Ecogres logo.

STONEWARE

22	ALENTEJO
26	APARTE
32	ARENITO
36	AUGUSTA
40	BEJA
46	BRISA
52	CRISTAL
54	ELEMENTS
60	FESTA
66	FRISO
74	LAGOA
80	LAGOA ECOGRES
86	LATTE BOWLS
88	LISBOA
92	LIVIA
98	LUZIA
104	MADEIRA
114	MARRAKESH
126	NÓTOS
132	NOVA
138	OUR COFFEE STORY
160	PEARL
166	PLANO
172	REDONDA
178	RIVIERA
186	RODA
192	ROSA
196	STACKED ORGANIC



STONEWARE COLLECTIONS

Sustainable aesthetics

Left to right: Marrakesh collection. Grespresso collection. Madeira collection. Livia Collection.



Turn the pages of our catalog and embark on a journey through beautifully set table suggestions, each an invitation to create memories that will last a lifetime.

Our stoneware collections embrace a deep commitment to sustainability, making every table a canvas for happy, eco-conscious memories.

Recycled (Marrakesh) and Fine Stoneware (Grespresso, Madeira and Livia) collections. Made in Portugal.





ALENTEJO



The Alentejo collection celebrates the peaceful feeling of the southern Portuguese landscape, filled with vast plains and olive trees. With gently flowing edges and soft glazes seamlessly mixed and matched, both dinnerware and oven-to-table accessories add warmth to any table, whether indoors or out.

Fine stoneware, glossy glaze. Made in Portugal.



Available in White and Turquoise



Charger plate/platter 34

- TP331-WHT
- TP331-TRQ

D34 H2.5 cm
[6]



Dinner plate 27

- TP273-WHT
- TP273-TRQ

D27 H2.6 cm
[6]



Soup/pasta plate 25

- TP241-WHT
- TP241-TRQ

D24.5 H3.9 cm | 63 cl
[6]



Salad/dessert plate 21

- TP213-WHT
- TP213-TRQ

D21.4 H2.5 cm
[6]



Appetizer plate 17

- TP172-WHT
- TP172-TRQ

D16.8 H2.3 cm
[6]



Appetizer plate 14

- TP142-WHT
- TP142-TRQ

D13.5 H3.5 cm
[6]



Pasta bowl 23

- TP231-WHT
- TP231-TRQ

D23 H5.3 cm | 119 cl
[6]



Soup/cereal bowl 16

- TS161-WHT
- TS161-TRQ

D16.2 H8.2 cm | 77 cl
[6]



Square bowl 12

- JS131-WHT
- JS131-TRQ

12.3 x 12.2 H6.1 cm | 36 cl
[6]



Square ramekin 10

- JN101-WHT
- JN101-TRQ

10.1 x 9.9 H5 cm | 15 cl
[4]



Mug 32 cl

- SC131-WHT
- SC131-TRQ

13.6 x 9.9 H10.1 cm | 32 cl
[6]



Tea cup and saucer 22 cl

- TCS01-WHT
- TCS01-TRQ

D16.8 H7.3 cm | 22 cl
[6]



Coffee cup and saucer 9 cl

- TCS02-WHT
- TCS02-TRQ

D14.5 H6.2 cm | 9 cl
[6]



Tea pot 135 cl

- TX261-WHT
- TX261-TRQ

26.1 x 14.6 H18.5 cm | 135 cl
[1]

Available in White and Turquoise



Tea pot 51 cl

○ TX201-WHT
● TX201-TRQ

20 x 11.1 H13.7 cm | 51.4 cl
[1]



Creamer 42 cl

○ TZ141-WHT
● TZ141-TRQ

13.4 x 10 H9.6 cm | 41.9 cl
[1]



Creamer 15 cl

○ TZ101-WHT
● TZ101-TRQ

10.3 x 7.3 H7.4 cm | 14.9 cl
[1]



Sugar bowl 39 cl

○ TX131-WHT
● TX131-TRQ

D10.2 H12.2 cm | 39.3 cl
[1]



Oval platter 32

○ JA321-WHT
● JA321-TRQ

32.3 x 22.2 H3.1 cm
[1]



Pasta/serving bowl 34

○ JP341-WHT
● JP341-TRQ

D34 H6.4 cm | 281 cl
[1]



Square tray 21

○ JP211-WHT
● JP211-TRQ

21 x 20.7 H2.8 cm
[2]



Rect. tray 31

○ TR311-WHT
● TR311-TRQ

31.3 x 10.2 H2.9 cm
[1]



Rect. tray 21

○ TR211-WHT
● TR211-TRQ

21.2 x 10.3 H3 cm
[1]



Rect. baker 30

○ JR301-WHT
● JR301-TRQ

30 x 22.2 H6.1 cm | 194 cl
[1]



Rect. baker 25

○ JR251-WHT
● JR251-TRQ

25.1 x 18.2 H5 cm | 111 cl
[1]



Candle holder 4

○ TD121-WHT
● TD121-TRQ

D11.8 H4 cm
[2]

APARTE



With organic shapes inspired by Nature, the Aparte collection was designed to complement all other Costa Nova collections. It features an appealing set of dining and serving pieces to combine with any tableware for informal and unexpected effects.





Coastal and organic shapes with hand-brushed rims. Statement pieces for both functional and decorative purposes.

Fine stoneware, glossy glaze. Made in Portugal.





Serving plate 33
LSP335-WHI

D33.4 H1.7 cm
[2]



Round board 21
LSD212-WHI

D21.2 H1 cm
[1]



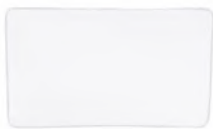
Rect. board 32
LSR321-WHI

32.2 x 17.9 H1.2 cm
[1]



Rect. tray 30
LSP301-WHI

29.5 x 15.2 H2.2 cm
[1]



Rect. tray 22
DR221-WHI

21.9 x 13.4 H0.8 cm
[2]



Divided dish 25
LSR252-WHI

25.1 x 13.3 H4.2 cm | 33 cl
[1]



Appetizer dish 41
MRD402-WHI

40.6 x 20.6 H8.4 cm | 86.5 cl
[1]



Tray 46
MRA451-WHI

45.5 x 20.7 H4.4 cm
[1]



Tray 31
MRA311-WHI

31.1 x 14.2 H4.3 cm
[1]



Tray 19
MRA191-WHI

18.9 x 8.2 H3.4 cm
[4]



Urchin bowl 18
MRS181-WHI

D18.4 H7.2 cm | 95 cl
[6]



Urchin bowl 14
MRS143-WHI

D14.4 H6 cm | 43.5 cl
[6]



Urchin bowl 12
MRS121-WHI

D12.4 H4.9 cm | 15 cl
[6]



Urchin bowl 11
MRN111-WHI

D10.5 H4.1 cm | 12.5 cl
[6]



Shell footed bowl 20
MRS201-WHI

D19.8 H11.7 cm | 154.3 cl
[6]



Shell footed bowl 14
MRS142-WHI

D14.2 H8.2 cm | 53 cl
[6]



Shell bowl 14
MRS141-WHI

D13.8 H8 cm | 51.5 cl
[6]



Shell bowl 11
MRC111-WHI

D11 H6.1 cm | 25.2 cl
[6]



Oval platter 20
LSA201-WHI

19.7 x 14 H3.2 cm
[2]



Onion soup bowl w/ handle 20
DS192-WHI

19.6 x 12.7 H5.9 cm | 46 cl
[4]



Ramekin/butter dish 7
DEN071-WHI

D6.5 H3.4 cm | 3.4 cl
[6]



Egg cup 5
XCD051-WHI

D5.4 H5 cm | 3.2 cl
[6]



Hashi holder 5
LSD052-WHI

5.1 x 2 H1.7 cm
[6]



Party bucket 32
LSD321-WHI

32.3 x 24.4 H21.1 cm | 698 cl
[1]



Paper card holder 5
DD052-CRM

5.2 x 2.2 H2.1 cm
[6]

ARENITO



Handcrafted exclusively from Costa Nova's innovative recycled clay formula, Ecogres, Arenito seamlessly combines functional design with a deep commitment to eco-consciousness. Arenito showcases a variety of espresso cups, lungo cups, latte bowls, and poke bowls, offered in six soothing colors. Each piece is adorned with an interior matte glaze, retaining its unglazed nature on the underside, a distinctive detail that effortlessly imparts an artisanal aesthetic to the collection.

Recycled stoneware, matte glaze (interior), unglazed (exterior). Made in Portugal.



Available in Champagne yellow, Aqua, Mauve rose, Sage green, Olive green and Charcoal grey



**Set 6 poke bowls
multicolor**
2RTSS02-MLT

Box: 58 x 39.5 H11 cm
[1]



**Set 6 latte bowls
multicolor**
2LNSS01-MLT

Box: 51 x 35 H10 cm
[1]



**Gift box 8 lungo cups
multicolor**
2LNCSS02-MLT

Box: 19.8 x 19.3 H14.3 cm
[1]



**Gift box 8 espresso cups
multicolor**
2LNCSS01-MLT

Box: 16.7 x 15.5 H11.4 cm
[1]



Poke bowl 19
2RTS192-CHM

D18.5 H7 cm | 99 cl
[6]



Latte bowl 16
2LNS161-CHM

D15.8 H7.7 cm | 67 cl
[6]



Lungo cup 20 cl
2LNC092-CHM

D8.7 H6.6 cm | 20 cl
[6]



Espresso cup 7 cl
2LNC062-CHM

D6 H4.9 cm | 6.5 cl
[6]



Poke bowl 19
2RTS192-AQU

D18.5 H7 cm | 99 cl
[6]



Latte bowl 16
2LNS161-AQU

D15.8 H7.7 cm | 67 cl
[6]



Lungo cup 20 cl
2LNC092-AQU

D8.7 H6.6 cm | 20 cl
[6]



Espresso cup 7 cl
2LNC062-AQU

D6 H4.9 cm | 6.5 cl
[6]

Gift box 8 espresso / lungo cups

Includes 2 espresso / lungo cups in champagne yellow and sage green and 1 espresso/lungo cup in aqua, mauve rose, olive green and charcoal grey.

Arenito color chart ● Champagne Yellow — Yellow ● Aqua — Light green ● Mauve Rose — Pink ● Sage Green — Green
● Olive Green — Brown ● Charcoal Grey — Dark grey

Available in Champagne yellow, Aqua, Mauve rose, Sage green, Olive green and Charcoal grey



Poke bowl 19
2RTS192-PNK

D18.5 H7 cm | 99 cl
[6]



Latte bowl 16
2LNS161-PNK

D15.8 H7.7 cm | 67 cl
[6]



Lungo cup 20 cl
2LNC092-PNK

D8.7 H6.6 cm | 20 cl
[6]



Espresso cup 7 cl
2LNC062-PNK

D6 H4.9 cm | 6.5 cl
[6]



Poke bowl 19
2RTS192-GRN

D18.5 H7 cm | 99 cl
[6]



Latte bowl 16
2LNS161-GRN

D15.8 H7.7 cm | 67 cl
[6]



Lungo cup 20 cl
2LNC092-GRN

D8.7 H6.6 cm | 20 cl
[6]



Espresso cup 7 cl
2LNC062-GRN

D6 H4.9 cm | 6.5 cl
[6]



Poke bowl 19
2RTS192-OLV

D18.5 H7 cm | 99 cl
[6]



Latte bowl 16
2LNS161-OLV

D15.8 H7.7 cm | 67 cl
[6]



Lungo cup 20 cl
2LNC092-OLV

D8.7 H6.6 cm | 20 cl
[6]



Espresso cup 7 cl
2LNC062-OLV

D6 H4.9 cm | 6.5 cl
[6]



Poke bowl 19
2RTS192-CHR

D18.5 H7 cm | 99 cl
[6]



Latte bowl 16
2LNS161-CHR

D15.8 H7.7 cm | 67 cl
[6]



Lungo cup 20 cl
2LNC092-CHR

D8.7 H6.6 cm | 20 cl
[6]



Espresso cup 7 cl
2LNC062-CHR

D6 H4.9 cm | 6.5 cl
[6]

AUGUSTA



Contemporary and versatile, Augusta takes on a natural feeling, balancing a matte-beige surface with bold rims and patterns. The collection highlights a selection of neutral dinnerware pieces with a black rim which can be combined with the patterned designs to add an eclectic touch to each table setting. Whether there is a celebration or a simple gathering, Augusta provides a table suitable for all tastes.

Fine stoneware, matte glaze. Made in Portugal.



Available in Natural-black



Charger plate/platter 35
COP341-NAB

D34.6 H2.7 cm
[6]



Dinner plate 27
COP271-NAB

D26.7 H2.9 cm
[6]



Salad/dessert plate 22
COP211-NAB

D21.6 H2.8 cm
[6]



Appetizer plate 17
SLP172-NAB

D16.7 H2.3 cm
[6]



Pasta bowl 22
COP214-NAB

D21.5 H5.5 cm | 85 cl
[6]



Soup/cereal bowl 15
COS151-NAB

D15.2 H7.3 cm | 50 cl
[6]



Mug 41 cl
COC131-NAB

13.8 x 9.7 H10.7 cm | 40.9 cl
[6]



Tea cup and saucer 20 cl
COCS01-NAB

D16.8 H6.1 cm | 20 cl
[6]



Coffee cup and saucer 8 cl
COCS02-NAB

D13.4 H6.1 cm | 8.3 cl
[6]



Serving bowl 29
SLS281-NAB

D28.6 H13.1 cm | 433 cl
[1]

Available in Diamond Weave



Serving plate 32
HPP321-DIA

D31.6 H1.3 cm
[6]



Dinner plate 27
COP271-DIA

D26.7 H2.9 cm
[6]



Salad/dessert plate 22
COP211-DIA

D21.6 H2.8 cm
[6]



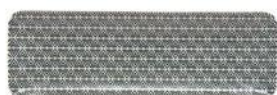
Appetizer plate 17
SLP172-DIA

D16.7 H2.3 cm
[6]



Mini plate/coaster 12
HPD121-DIA

D11.5 H1 cm
[6]



Rect. tray 37
COR371-DIA

36.8 x 12.2 H2.8 cm
[1]



Mini rect. tray 13
COR131-DIA

13.1 x 9.5 H2.2 cm
[6]

BEJA



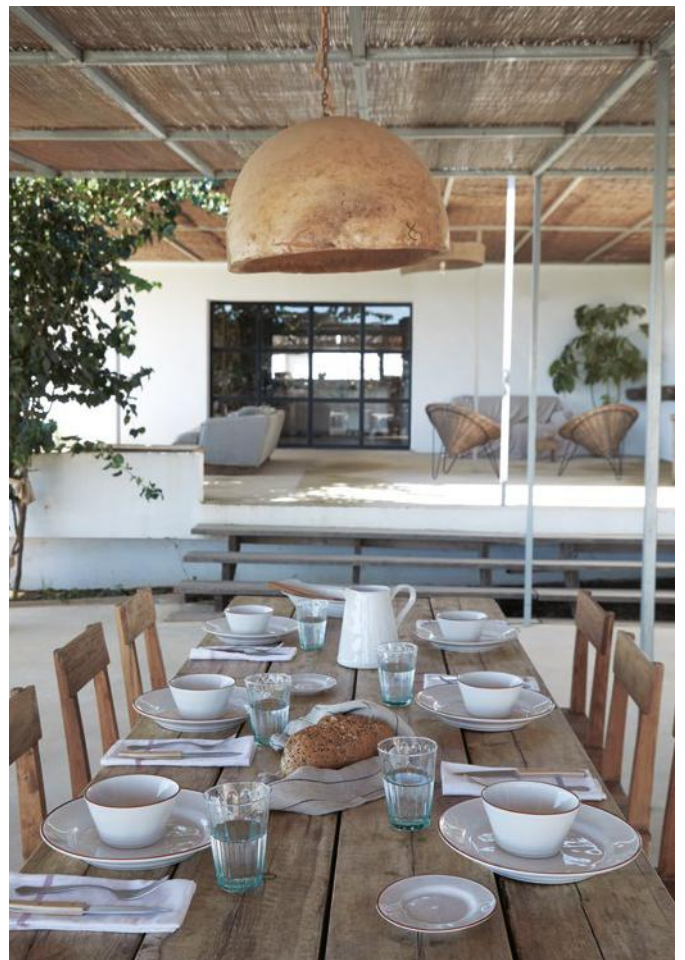
Stylish and contemporary, the Beja collection adds a sophisticated yet casual look to any table. With graceful lines, both dinnerware, and serving pieces feature a sleek rim in three traditional colors that capture the architectural landscape of Beja and the nostalgic charm of old enameled collections.

PHOTOGRAPHED IN **CUCUMBI, ALENTEJO**



Beja is a timeless tableware collection with a nostalgic look, and the perfect balance between simple, organic lines and a stunning white glaze. The hand-painted rims bring a handcrafted appeal to each piece.

Fine stoneware, glossy glaze. Made in Portugal.





Available in White & Cream, White & Blue and White & Red



Charger plate/platter 33

- ATP331-CRM
- ATP331-BLU
- ATP331-RED

D33.2 H2.6 cm
[6]



Dinner plate 28

- ATP281-CRM
- ATP281-BLU
- ATP281-RED

D28.2 H3.7 cm
[6]



Salad/dessert plate 23

- ATP231-CRM
- ATP231-BLU
- ATP231-RED

D22.6 H3.3 cm
[6]



Soup/pasta plate 21

- ATP211-CRM
- ATP211-BLU
- ATP211-RED

D21.1 H5.3 cm | 59.5 cl
[6]



Appetizer plate 15

- ATP151-CRM
- ATP151-BLU
- ATP151-RED

D14.8 H2.4 cm
[6]



Soup/cereal bowl 14

- ATS141-CRM
- ATS141-BLU
- ATS141-RED

D14.2 H7.2 cm | 45 cl
[6]



Round ramekin 9

- ATN091-CRM
- ATN091-BLU
- ATN091-RED

D8.8 H4.9 cm | 11 cl
[6]



Ramekin/butter dish 7

- ATN071-CRM
- ATN071-BLU
- ATN071-RED

D6.7 H3.1 cm | 4.5 cl
[6]



Mug 36 cl

- ATC132-CRM
- ATC132-BLU
- ATC132-RED

13.1 x 9.3 H10.2 cm | 35.5 cl
[6]



Tea cup and saucer 19 cl

- ATCS01-CRM
- ATCS01-BLU
- ATCS01-RED

D16.7 H7.6 cm | 18.5 cl
[6]



Coffee cup and saucer 8 cl

- ATCS02-CRM
- ATCS02-BLU
- ATCS02-RED

D12.5 H6.4 cm | 8 cl
[6]



Tea pot 42 cl

- ATX181-CRM

18 x 10.7 H11 cm | 42 cl
[1]



Creamer 19 cl

- ATZ111-CRM

10.7 x 7.6 H9 cm | 18.5 cl
[1]



Sugar bowl 19 cl

- ATX101-CRM

10 x 8.1 H8.4 cm | 19.3 cl
[1]

Available in White & Cream, White & Blue and White & Red



Round platter 38

- ATP381-BLU
- ATP381-RED

D38.3 H3 cm
[1]



Oval platter 40

- ATA401-CRM
- ATA401-BLU
- ATA401-RED

40.2 x 31.9 H4.2 cm
[1]



Oval platter 30

- ATA301-CRM
- ATA301-BLU
- ATA301-RED

30 x 21.6 H3.3 cm
[1]



Serving bowl 30

- ATS301-CRM
- ATS301-BLU

D30.1 H9.4 cm | 261.5 cl
[1]



Pitcher 219 cl

- ATZ221-CRM
- ATZ221-BLU

22.4 x 16.7 H19.9 cm | 218.5 cl
[1]



Rect. tray 29

- ATR291-CRM

29.2 x 15.3 H2.2 cm
[1]



Rect. tray 22

- ATR221-CRM

22 x 11.1 H1.6 cm
[2]

BRISA



The warm breeze that blows from the east and cascades along the Algarve coast with fruity aromas and the flavors of Ria Formosa was the inspiration for this collection. The blended white and blue glazes and organic shapes transport us to the intricate landscape of lagoons, canals, salt works, and sandy beaches stretching across deserted islands. This collection adds light to every gathering and turns any table into a memorable experience.



The organic shapes and mix of reactive glazes make each piece one of a kind.

Fine stoneware, glossy glaze. Made in Portugal.





Available in Sal and Ria Blue



Dinner plate 28

● LNP281-SAL
● LNP281-RIA

D27.7 H3.3 cm
[6]



Salad/dessert plate 22

● LNP221-SAL
● LNP221-RIA

D21.7 H2.7 cm
[6]



Appetizer plate 15

● LNP151-SAL
● LNP151-RIA

D15.3 H2.3 cm
[6]



Oval dinner plate/platter 27

● GOP271-SAL
● GOP271-RIA

26.6 x 22.5 H3 cm
[6]



Oval plate 20

● GOP201-SAL
● GOP201-RIA

20.3 x 15.8 H2.5 cm
[6]



Oval plate 15

● GOP161-SAL
● GOP161-RIA

15.4 x 12 H2.4 cm
[6]



Oval mini plate 11

● GOP111-SAL
● GOP111-RIA

11.4 x 8.8 H1.8 cm
[6]



Oval plate/platter 24

● GOA241-SAL
● GOA241-RIA

24.3 x 9.2 H2 cm
[2]



Pasta bowl 23

● GOP231-SAL
● GOP231-RIA

D23.3 H5.7 cm | 92.3 cl
[6]



Soup/cereal bowl 16

● LNS161-SAL
● LNS161-RIA

D15.8 H7.7 cm | 67 cl
[6]



Oval soup/cereal bowl 16

● GOS161-SAL
● GOS161-RIA

15.5 x 12 H8.1 cm | 45 cl
[6]



Oval bowl 15

● GOS151-SAL
● GOS151-RIA

15.2 x 12 H4.8 cm | 20 cl
[6]



Oval bowl 10

● GOS102-SAL
● GOS102-RIA

10.3 x 7.9 H3.6 cm | 7.5 cl
[6]



Deep oval bowl 10

● GOS101-SAL
● GOS101-RIA

9.9 x 7.4 H5 cm | 13 cl
[6]

Available in Sal and Ria Blue



Mug 44 cl

● LNC132-SAL
● LNC132-RIA

13.4 x 9.7 H10.5 cm | 44 cl
[6]



Tea cup and saucer 23 cl

● LNCS02-SAL
● LNCS02-RIA

D15.4 H6.9 cm | 23 cl
[6]



Coffee cup and saucer 7 cl

● LNCS03-SAL
● LNCS03-RIA

D12.5 H5.3 cm | 7 cl
[6]



Creamer 20 cl

● GOZ101-SAL
● GOZ101-RIA

9.2 x 7 H9.5 cm | 20 cl
[1]



Mini jug/creamer 11 cl

● GOZ081-SAL
● GOZ081-RIA

D6 H8 cm | 11 cl
[1]



Oval platter 41

● GOA411-SAL
● GOA411-RIA

41 x 28.3 H4 cm
[1]



Pasta/serving bowl 37

● GOS371-SAL
● GOS371-RIA

D36.6 H6.7 cm | 332.8 cl
[1]



Serving bowl 28

● LNS281-SAL
● LNS281-RIA

D27.7 H11.6 cm | 351.5 cl
[1]



Urchin bowl 18

● MRS181-RIA

D18.4 H7.2 cm | 95 cl
[6]



Pitcher 176 cl

● GOZ201-SAL
● GOZ201-RIA

18.6 x 13.8 H19.8 cm | 176.2 cl
[1]



Oval vase 20

● VAV201-SAL
● VAV201-RIA

D15.8 H19.6 cm | 220.4 cl
[1]



Oval vase 15

● VAV151-SAL
● VAV151-RIA

D11.7 H14.7 cm | 86.7 cl
[1]

CRISTAL



The Cristal Nacar collection draws its inspiration from the intricate patterns of exquisite crystal craftsmanship, as its name aptly suggests. This tactile and elegantly sophisticated collection goes beyond ordinary, creating a striking presence on any table. With its stunning reactive finish, Cristal Nacar draws from the natural and refined hues of the beach shells.

Fine stoneware, glossy glaze with unique finish. Made in Portugal.



Dinner plate 28
STP281-NAC

D27.7 H2.1 cm
[6]



Salad/dessert plate 22
STP223-NAC

D22.2 H2.2 cm
[6]



Appetizer plate 15
STP151-NAC

D15.4 H2.4 cm
[6]



Soup/cereal bowl 18
STS181-NAC

D17.9 H6.7 cm | 65 cl
[6]



Soup/cereal bowl 16
STS151-NAC

D15.5 H8 cm | 69.8 cl
[6]



Fruit bowl 13
STS131-NAC

D12.5 H6.4 cm | 33.8 cl
[6]



Mug 29 cl
STC131-NAC

13.3 x 8.6 H8.9 cm | 28.5 cl
[6]



Serving bowl 29
STS291-NAC

D28.5 H12.4 cm | 480 cl
[1]



Serving bowl 21
STS211-NAC

D21.3 H9.5 cm | 206.8 cl
[1]



Round platter 39
STP391-NAC

D39 H3.5 cm
[1]



Aperitif dish 25
STD251-NAC

D24.6 H3.3 cm
[1]



Footed plate 31
STD301-NAC

D30.9 H14.5 cm
[1]

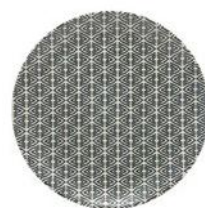
ELEMENTS



An eclectic range of accent plates and mugs meant for layering with other neutral tableware collections. Whether you choose to playfully layer plain dinner plates or use them for tapas and small appetizers, Elements is perfect for everyday meals or tapas style dining with friends. Unique and inspiring patterns to create a completely new look for different occasions.



AUGUSTA DIAMOND WEAVE



Set 4 salad/dessert plates 22 COPS03-DMN | D21.6 H2.8 cm [1]

FAUNA



Set 4 mugs 35 cl DCS03-FAU | 13 x 9.3 H8.8 cm | 35 cl [1]



Set 4 salad/dessert plates 22 COPS03-FAU | D21.6 H2.8 cm [1]

LAMEGO



Set 4 salad/dessert plates 22 COPS03-LMA | D21.6 H2.8 cm [1]

Set 4 appetizer plates 17 SLPS03-LMA | D16.6 H1.5 cm [1]



Lamego offers a sophisticated range of four distinctive patterns engraved on a matte stoneware surface.

Augusta diamond weave pattern is the perfect addition to a plain dinnerware or as a standalone option at the table.

Fine stoneware, matte glaze. Made in Portugal.

Detail Algarve salad/dessert plate.



ALGARVE



Set 4 salad/dessert plates 22 COPS03-ALA | D21.6 H2.8 cm [1]

Set 4 appetizer plates 17 SLPS03-ALA | D16.6 H1.5 cm [1]

LISBOA



Set 4 salad/dessert plates 22 COPS03-BLT | D21.6 H2.8 cm [1]

Fine stoneware, glossy craquelée glaze. Made in Portugal.

FESTA



Save and preserve the environment from your table with Festa. Made of Ecogres, a proprietary composition of clay and recycled materials, the essence of the green economy highlights the ingenuity and endless combinations that can be displayed for any gathering.

PHOTOGRAPHED IN **CUCUMBI, ALENTEJO**



Blending the one-use forms of the past and ecological sustainability alternatives came the eco-friendly Festa.

The ecogres clay is both an aesthetic statement and a sustainability highlight.

Recycled stoneware, glossy glaze (interior), unglazed (exterior).
Made in Portugal.







Dinner plate 27
1DIP271E-WHI

D27.2 H2.6 cm
[6]



Salad/dessert plate 21
1DIP211E-WHI

D21 H2.5 cm
[6]



Pasta bowl 21
1DIP212E-WHI

D21 H6 cm | 87 cl
[6]



Soup/cereal bowl 16
1ERS161-WHI

D16 H7.5 cm | 64.5 cl
[6]



Mug 39 cl
1DIC141-WHI

13.3 x 10.1 H10.5 cm | 39 cl
[6]



Creamer 26 cl
1DIZ091-WHI

9.5 x 7.4 H9.1 cm | 26.3 cl
[1]



Sugar bowl 15 cl w/ spoon
1DIXS01-WHI

7.5 x 7.5 H8.2 cm | 15.3 cl
[1]



Pitcher 80 cl
1DIZ231-WHI

9.2 x 7.3 H23.6 cm | 80 cl
[1]



Pie dish 25
1DIT251E-WHI

D25.3 H5.4 cm | 117 cl
[1]



Muffin dish 13
1DIS131-WHI

D13.1 H5 cm | 23.8 cl
[6]



Rect. tray/baker 34
1DIR333E-WHI

33.6 x 22.9 H5.4 cm | 204.5 cl
[1]



Loaf pan 22
1DIR221E-WHI

22.4 x 11.7 H7.2 cm | 97.7 cl
[1]



Decorative tree 32
1DD321E-WHI

17.9 x 16.7 H31.5 cm
[1]



Decorative tree 26
1TRD261E-WHI

15.3 x 14.3 H25.8 cm
[1]



Decorative tree 21
1CND211E-WHI

11.9 x 11.6 H20.8 cm
[1]



FRISO



Found in some of the finest hotels and restaurants around the world, the Friso collection sets the standard for elegant simplicity, unlimited versatility, and exceptional durability. Featuring a subtle grooved edge hand-painted by skilled artisans, it retains a new attitude in stoneware for entertaining or casual everyday use.

PHOTOGRAPHED IN **CERVEJARIA COSTA NOVA, AVEIRO**





Friso is available in three colors, white (WHI), grey (GRY) and sage green (SAG).



White and grey glazes are complemented with sage green color, to create a soft palette that blends harmoniously in any occasion.

Distinguished by its elegant simplicity, Friso features patined hand-brushed edges in all three colors.

Both dining and serving pieces are exceptionally resistant and suit a variety of table styles.

Fine stoneware, glossy glaze. Made in Portugal.



Charger plate/platter 34

○ FIP343-WHI

D34.3 H2.3 cm
[6]



Dinner plate 28

○ FIP281-WHI
● FIP281-GRY
● FIP281-SAG

D28.4 H2.7 cm
[6]



Soup/pasta plate 25

○ FIP261-WHI
● FIP261-GRY
● FIP261-SAG

D25.3 H4.5 cm | 81.4 cl
[6]



Salad/dessert plate 22

○ FIP221-WHI
● FIP221-GRY
● FIP221-SAG

D22.4 H2.3 cm
[6]



Appetizer plate 16

○ FIP161-WHI
● FIP161-GRY
● FIP161-SAG

D16.3 H1.9 cm
[6]



Steak plate 33

○ FIP332-WHI

33.2 x 23 H2.6 cm
[6]



Pasta bowl 23

○ FIP231-WHI

D23.4 H5.7cm | 92.8 cl
[6]



Soup/cereal bowl 16

○ FIS161-WHI
● FIS161-GRY
● FIS161-SAG

D16.2 H7.3 cm | 74 cl
[6]



Low bowl 15

○ FIS151-WHI

D14.7 H5.5 cm | 39.6 cl
[6]



Fruit bowl 11

○ FIN111-WHI

D11.3 H6.6 cm | 28.3 cl
[6]



Ramekin/butter dish 7

○ ATN071-WHI

D6.7 H3.1 cm | 4.5 cl
[6]



Jumbo cup 73 cl

○ FIS181-WHI

18.1 x 15 H8.8 cm | 72.5 cl
[6]



Mug 41 cl

○ FIC132-WHI
● FIC132-GRY
● FIC132-SAG

13.3 x 9.2 H10.9 cm | 41 cl
[6]



Cappuccino cup 19 cl

○ FIC101-WHI

10.3 x 7.4 H8.2 cm | 18.5 cl
[6]



Tea cup and saucer 26 cl

○ FICS01-WHI

D17.1 H7.4 cm | 26 cl
[6]



Coffee cup and saucer 9 cl

○ FICS02-WHI

D12.4 H5.3 cm | 8.6 cl
[6]



Tea pot 50 cl

○ FIX191-WHI

19.2 x 11.4 H11.6 cm | 50 cl
[1]



Creamer 32 cl

○ FIZ121-WHI

11.6 x 9.1 H12 cm | 32.1 cl
[1]



Creamer 15 cl

○ FIZ101-WHI

9.5 x 7 H9.2 cm | 14.8 cl
[1]



Sugar bowl 50 cl

○ FIX121-WHI

D11.5 H10.8 cm | 49.8 cl
[1]



Sugar packet bowl 30 cl

○ FIN121-WHI

12 x 7.8 H6.2 cm | 30 cl
[1]



Sugar packet bowl 11 cl

○ FIN081-WHI

7.6 x 6 H6.1 cm | 10.5 cl
[2]



Oval platter 41

○ FIA402-WHI

41 x 29.6 H3.9 cm
[1]



Oval platter 30

○ FIA302-WHI

30.1 x 21 H3.1 cm
[1]



Oval platter 20

○ FIA201-WHI

19.7 x 13.6 H2.9 cm
[2]



Pasta/serving bowl 34

○ FIS341-WHI

D33.6 H7.2 cm | 289.7 cl
[1]



Serving bowl 24

○ FIS241-WHI

D24.4 H11.5 cm | 283.5 cl
[1]



Serving bowl 21

○ FIS211-WHI

D21.4 H10.1 cm | 178 cl
[1]



Set 4 Napkin Rings

○ FIDS01-WHI

5.1 x 3.3 H3.1 cm
[1]



Salt and pepper 4 cl

○ FIDS02-WHI

6.8 x 5 H6.8 cm | 4 cl
[1]



Pitcher 166 cl

○ FIZ212-WHI

20.2 x 14.8 H21.6 cm | 166 cl
[1]



Pie dish 30

○ FIT301-WHI

D30.2 H4.8 cm | 195 cl
[1]



Pie dish 16

○ FIT161-WHI

D16.1 H4.6 cm | 46 cl
[1]



Tray 30

○ FIR303-WHI

30.1 x 22.5 H3.2 cm
[1]



Tray 25

○ FIR252-WHI

25.1 x 18.9 H3.2 cm
[1]



Rect. baker 35

○ FIR351-WHI

34.9 x 26 H8.3 cm | 401.8 cl
[1]



Rect. baker 30

○ FIR302-WHI

29.7 x 22.2 H7.1 cm | 259.9 cl
[1]



Rect. baker 25

○ FIR251-WHI

25.3 x 18.6 H6.2 cm | 152.3 cl
[1]



Rect. baker 20

○ FIR201-WHI

20.2 x 15.2 H5.2 cm | 83 cl
[1]



LAGOA



Versatile, Lagoa offers the perfect balance between contemporary style and durability. Perfectly imperfect in shape and naturally tactile, this collection pairs elements of artisanal feel with modern finishes. The soft matte beige glaze is a must-have set for everyday meals, while the dark metallic finish effortlessly enhances your own personal style in any occasion.





Lagoa is an eco-friendly stylish collection, finished with recycled metallic raw materials.

Fine stoneware, matte glaze (PDR), reactive matte-speckled glaze (MTL). Stainless steel 304 PVD (tea pot). Made in Portugal.





Charger plate/platter 31

- LOP311-MTL
- LOP311-PDR

D31 H2.5 cm
[6]



Dinner plate 27

- LOP271-MTL
- LOP271-PDR

D27.2 H2.4 cm
[6]



Salad/dessert plate 21

- LOP211-MTL
- LOP211-PDR

D21.1 H2 cm
[6]



Appetizer plate 16

- LOP161-MTL
- LOP161-PDR

D16.2 H1.7 cm
[6]



Soup/pasta bowl 24

- LOP241-MTL
- LOP241-PDR

D23.7 H4.3 cm | 92.6 cl
[6]



Soup/pasta bowl 20

- LOP201-MTL
- LOP201-PDR

D20 H4.5 cm | 68.5 cl
[6]



Soup/cereal bowl 14

- LOS141-MTL
- LOS141-PDR

D13.9 H6.1 cm | 48.7 cl
[6]



Bowl 10

- LON101-MTL
- LON101-PDR

D10.3 H5 cm | 21.4 cl
[6]



Ramekin/butter dish 7

- LON071-MTL
- LON071-PDR

D6.9 H3.9 cm | 6.5 cl
[6]



Tumbler 34 cl

- LOC101-MTL
- LOC101-PDR

D9.6 H10.1 cm | 33.9 cl
[6]



Mug 31 cl

- LOC131-MTL
- LOC131-PDR

13 x 9.5 H10 cm | 31.1 cl
[6]



Tea cup and saucer 19 cl

- LOCS02-MTL
- LOCS02-PDR

D16.2 H8 cm | 18.5 cl
[6]



Coffee cup and saucer 9 cl

- LOCS03-MTL
- LOCS03-PDR

D12.5 H6.5 cm | 8.6 cl
[6]



Tea pot w/ infuser 60 cl

● LOX191-MTL
● LOX191-PDR

18.5 x 14.2 H10 cm | 60 cl
[1]



Creamer 17 cl

● LOZ101-MTL
● LOZ101-PDR

10.3 x 8.6 H7.5 cm | 17 cl
[1]



Sugar bowl 17 cl

● LOX091-MTL
● LOX091-PDR

D9 H8.7 cm | 16.5 cl
[1]



Serving bowl 24

● LOS241-MTL
● LOS241-PDR

D24.2 H10.4 cm | 306 cl
[1]



Rect. tray 19

● LOR191-MTL
● LOR191-PDR

18.5 x 11.7 H2.2 cm
[2]

LAGOA ECOGRES



Lagoa Ecogres is made of Ecogres, a proprietary clay, composed of recycled materials and completely sustainable. Lagoa Ecogres features contrasting glazes, matte and dark grey on the exterior and translucent white and black on the interior. The textured exterior adds a warm touch to this contemporary collection. Perfectly imperfect in shape and naturally tactile, Lagoa Ecogres balances handcrafted artisanal elements with modern finishes.

Recycled stoneware, glossy glaze (interior), unglazed (exterior). Made in Portugal.









Dinner plate 27

- 1LOP271e-WHI
- 1LOP271e-BLK

D27.2 H2.4 cm
[6]



Salad/dessert plate 21

- 1LOP211e-WHI
- 1LOP211e-BLK

D21.1 H2 cm
[6]



Appetizer plate 16

- 1LOP161e-WHI
- 1LOP161e-BLK

D16.2 H1.7 cm
[6]



Soup/pasta bowl 24

- 1LOP241e-WHI
- 1LOP241e-BLK

D23.7 H4.3 cm | 92.6 cl
[6]



Soup/cereal bowl 14

- 1LOS141-WHI
- 1LOS141-BLK

D13.9 H6.1 cm | 48.7 cl
[6]



Ramekin/butter dish 7

- 1LON071-WHI
- 1LON071-BLK

D6.9 H3.9 cm | 6.5 cl
[6]



Mug 31 cl

- 1LOC131-WHI
- 1LOC131-BLK

13 x 9.5 H10 cm | 31.1 cl
[6]



Tea cup and saucer 19 cl

- 1LOCS02e-WHI
- 1LOCS02e-BLK

D16.2 H8 cm | 18.5 cl
[6]



Coffee cup and saucer 9 cl

- 1LOCS03-WHI
- 1LOCS03-BLK

D12.5 H6.5 cm | 8.6 cl
[6]



Rect. tray 19

- 1LOR191e-WHI
- 1LOR191e-BLK

18.5 x 11.7 H2.2 cm
[2]



LATTE BOWLS

Our collection of vibrantly glazed bowls makes a joyful addition to any table. Perfect in shape and size for multiple purposes — açai bowls, smoothie bowls, ice-creams, and more.



Set 4 latte bowls 15
DSS09-WHI

D14.5 H8 cm | 55 cl
[1]



Set 4 latte bowls 15
DSS09-AQU

D14.5 H8 cm | 55 cl
[1]



Set 4 latte bowls 15
DSS09-DEN

D14.5 H8 cm | 55 cl
[1]



Set 4 latte bowls 15
DSS09-RED

D14.5 H8 cm | 55 cl
[1]



Set 4 latte bowls 15
DSS09-MLT

D14.5 H8 cm | 55 cl
[1]

Available in White, Aqua, Denim and Red. Fine stoneware, glossy glaze. Made in Portugal.



LISBOA



Taking inspiration from the Portuguese blue and white tiles of the 18th and 19th centuries, Lisboa adds sophistication to any dinner table. Its intricate beauty is highlighted when paired with a simpler set. Each piece/set from the Lisboa collection comes with a stylishly simple and eco-friendly gift box. With its iconic Portuguese design, Lisboa pieces are perfect as standalone or when used to add striking contrast to usual white tableware.





Charger plate/platter 35
COP341-BLT

D34.6 H2.7 cm
[1]



Buffet plate 30
COP291-BLT

D29.9 H3.1 cm
[1]



Set 4 Salad/dessert plates 22
COPS03-BLT

D21.6 H2.8 cm
[1]



Set 4 appetizer plates 17
SLPS03-BLT

D16.7 H2.3 cm
[1]



Pasta bowl 22
COP214-BLT

D21.5 H5.5 cm | 85 cl
[1]



Set 2 mugs 52 cl
YCCS02-BLT

14.4 x 10 H11 cm | 52 cl
[1]



Pasta/serving bowl 34
FIS343-BLT

D33.6 H7.2 cm | 289.5 cl
[1]



Rect. tray 37
COR371-BLT

36.8 x 12.2 H2.8 cm
[1]



Pitcher 173 cl
CZ211-BLT

20.8 x 13.8 H18.4 cm | 173 cl
[1]



A timeless and sophisticated collection that takes us from one gathering to another, whether casual or more informal. The hand-brushed rims give each piece a unique character.

Fine stoneware, glossy craquelée glaze. Made in Portugal.

LIVIA



Nested in elegance, Livia presents itself as a modern approach to tableware. Each piece features an organic look and feel over two contrasting glazes - a lustrous (white) and a matte reactive glaze (black, mauve rose and champagne). Handcrafted and designed to inspire our senses, this complete collection has all the elements to enhance any gathering.

PHOTOGRAPHED IN **MELIDES, PORTUGAL**







Soak in the tranquil bliss of your gathering while guests reminisce over old memories and others create new ones. Champagne (CHM) and Mauve Rose (PNK) colors inspire a sense of calm, comfort, and tranquility at every meal. The combination of glossy white and matte reactive glaze (BLK, PNK and CHM), despite their differences, brings a casual sophistication to the table with their organic shapes.

Fine stoneware, glossy glaze (WHI), matte reactive glaze (BLK, PNK and CHM). Made in Portugal.

Available in White, Matte Black, Champagne and Mauve Rose



Dinner plate 28

○ LNP281-WHI ● LNP281-BLK
● LNP281-CHM ● LNP281-PNK

D27.7 H3.3 cm
[6]



Salad/dessert plate 22

○ LNP221-WHI ● LNP221-BLK
● LNP221-CHM ● LNP221-PNK

D21.7 H2.7 cm
[6]



Oval plate 15

○ GOP161-WHI ● GOP161-BLK
● GOP161-CHM ● GOP161-PNK

15.4 x 12 H2.4 cm
[6]



Pasta bowl 23

○ GOP231-WHI ● GOP231-BLK
● GOP231-CHM ● GOP231-PNK

D23.3 H5.7 cm | 92.3 cl
[6]



Soup/cereal bowl 15

○ IOS152-WHI ● IOS152-BLK
● IOS152-CHM ● IOS152-PNK

D15 H8.2 cm | 65.5 cl
[6]



Fruit bowl 13

○ IOC132-WHI
● IOC132-BLK

D12.7 H6.5 cm | 36 cl
[6]



Oval bowl 10

○ GOS102-WHI
● GOS102-BLK

10.3 x 7.9 H3.6 cm | 7.5 cl
[6]



Mug 36 cl

○ GOC131-WHI ● GOC131-BLK
● GOC131-CHM ● GOC131-PNK

14 x 10.3 H7.6 cm | 36.3 cl
[6]



Oval platter 45

○ GOA451-WHI ● GOA451-BLK
● GOA451-CHM ● GOA451-PNK

45 x 31.1 H4.1 cm
[1]



Oval platter 41

○ LNA411-WHI
● LNA411-BLK

41 x 14.3 H4.7 cm
[1]



Oval platter 33

○ LNA331-WHI
● LNA331-BLK

33 x 11.1 H4.7 cm
[1]

Available in White, Matte Black, Champagne and Mauve Rose

**Serving bowl 37**

- GOS371-WHI
- GOS371-BLK

36.6 x 35.8 H6.7 cm | 332.8 cl
[1]

**Serving bowl 26**

- IOS261-WHI ● IOS261-BLK
- IOS261-CHM ● IOS261-PNK

D26.3 H12.5 cm | 339.5 cl
[1]

**Pitcher 219 cl**

- GOZ211-WHI
- GOZ211-BLK

20.4 x 9.5 H20.9 cm | 218.5 cl
[1]

**Oval baker 36**

- LNA361-WHI
- LNA361-BLK

35.9 x 22.4 H7.2 cm | 192.5 cl
[1]

**Oval baker 31**

- LNA321-WHI
- LNA321-BLK

31.3 x 17.3 H7.3 cm | 141.5 cl
[1]

**Oval baker 26**

- LSA251-WHI
- LSA251-BLK

25.6 x 18.3 H6.8 cm | 143.5 cl
[1]

**Rect. baker 30**

- LSR301-WHI
- LSR301-BLK

30 x 22.3 H7.4 cm | 257 cl
[1]

**Square baker 22**

- LSQ221-WHI
- LSQ221-BLK

21.9 x 21.7 H7.3 cm | 195 cl
[1]

**Spoon rest 23**

- IOD232-WHI
- IOD232-BLK

23.1 x 11.5 H2.1 cm
[2]

**Utensil holder 16**

- LSV161-WHI
- LSV161-BLK

15.1 x 14.9 H15.9 cm | 182.8 cl
[1]

LUZIA



The glow of the Luzia collection is inspired by the “golden hour,” that time of day when the sun is almost touching the horizon and the light softens every color. This collection is both casual and sophisticated, and is guaranteed to be a charming choice for any modern table setting.





Luzia is available in three colors, cloud white (CLW), ash grey (ASH) and Crimson (CRN).

Fine stoneware, glossy glaze. Made in Portugal.



A timeless and sophisticated collection that takes us from one gathering to another, whether casual or more informal. The hand-brushed rims give each piece a unique character.



Charger plate/platter 33

- PEP335-CLW
● PEP335-ASH

D33 H3 cm
[6]



Dinner plate 28

- PEP287-CLW ● PEP287-ASH
● PEP287-CRN

D28.2 H3 cm
[6]



Soup/pasta plate 23

- PEP235-CLW ● PEP235-ASH
● PEP235-CRN

D23 H5.4 cm | 68 cl
[6]



Salad/dessert plate 23

- PEP234-CLW ● PEP234-ASH
● PEP234-CRN

D22.9 H3 cm
[6]



Appetizer plate 17

- PEP176-CLW ● PEP176-ASH
● PEP176-CRN

D16.9 H2.4 cm
[6]



Soup/cereal bowl 16

- PES163-CLW
● PES163-ASH

D16.2 H6.7 cm | 80 cl
[6]



Low bowl 13

- PES133-CLW

D12.8 H5.6 cm | 32 cl
[6]



Fruit bowl 11

- PES113-CLW

D10.9 H8 cm | 35.5 cl
[6]



Footed bowl 16

- PES162-CLW

D16 H12.5 cm | 80 cl
[6]



Breakfast mug 34 cl

- PEC141-CLW
- PEC141-ASH

D13.7 H8.2 cm | 34 cl
[6]



Mug 34 cl

- PEC132-CLW
- PEC132-ASH
- PEC132-CRN

13 x 9 H11.5 cm | 33.5 cl
[6]



Tea cup and saucer 24 cl

- PECS10-CLW
- PECS10-ASH

D16.9 H7.5 cm | 24 cl
[6]



Coffee cup and saucer 7 cl

- PECS11-CLW
- PECS11-ASH

D13 H6.5 cm | 7 cl
[6]



Oct. platter 41

- PER401-CLW

41 x 29.9 H3.9 cm
[1]



Oct. serving bowl 35

- PES351-CLW

D35 H10 cm | 197 cl
[1]



Pitcher 193 cl

- PEZ221-CLW

22.2 x 15.5 H19.3 cm | 193 cl
[1]



Oct. baker 22 w/ metallic holder

- PER222-CLW

28.3 x 16.1 H6.3 cm | 100 cl
[1]



Oct. baker 22

- PER221-CLW

22.3 x 15.9 H5.8 cm | 100 cl
[1]

MADEIRA



The Madeira collection elevates stoneware to a new level of design. Drawing inspiration from nature, it showcases three captivating colors and a unique “crackled” surface that beautifully mimics the effect of dappled lighting. The versatility of all colors allows for seamless mixing and matching.

PHOTOGRAPHED IN **MELIDES, PORTUGAL**











Featuring a glossy and deep reactive crackled glaze, the new Madeira in cream color effortlessly infuses a warm and casually sophisticated touch into any table setting.



Fine stoneware, glossy craquelée glaze. Made in Portugal.

New color Cream



Dinner plate 28

● BOP281-CRM

D28 H3.4 cm
[6]



Salad/dessert plate 22

● BOP221-CRM

D21.9 H3 cm
[6]



Appetizer plate 16

● BOP162-CRM

D16.4 H2.5 cm
[6]



Soup/pasta bowl 19

● DES192-CRM

D19 H5.6 cm | 80.6 cl
[6]



Soup/cereal bowl 14

● DES141-CRM

D14.1 H7 cm | 43.5 cl
[6]



Fruit bowl 12

● DES121-CRM

D11.5 H6 cm | 26 cl
[6]



Round ramekin 9

● DEN091-CRM

D9.1 H4.6 cm | 11.1 cl
[6]



Mug 44 cl

● DEC144-CRM

13.7 x 10 H10.8 cm | 44 cl
[6]



Serving bowl 24

● DES241-CRM

D24.3 H12.8 cm | 260.5 cl
[1]



Rect. tray 27

● BOR271-CRM

27.2 x 10.8 H2.2 cm
[1]





Dinner plate 28

● BOP281-BLU
● BOP281-GRY

D28 H3.4 cm
[6]



Salad/dessert plate 22

● BOP221-BLU
● BOP221-GRY

D21.9 H3 cm
[6]



Appetizer plate 16

● BOP162-BLU
● BOP162-GRY

D16.4 H2.5 cm
[6]



Soup/pasta bowl 19

● DES192-BLU
● DES192-GRY

D19 H5.6 cm | 80.6 cl
[6]



Soup/cereal bowl 14

● DES141-BLU
● DES141-GRY

D14.1 H7 cm | 43.5 cl
[6]



Fruit bowl 12

● DES121-BLU
● DES121-GRY

D11.5 H6 cm | 26 cl
[6]



Round ramekin 9

● DEN091-BLU
● DEN091-GRY

D9.1 H4.6 cm | 11.1 cl
[6]



Ramekin/butter dish 7

● DEN071-BLU
● DEN071-GRY

D6.5 H3.4 cm | 3.4 cl
[6]



Mug 44 cl

● DEC144-BLU
● DEC144-GRY

13.7 x 10 H10.8 cm | 44 cl
[6]



Tea cup and saucer 25 cl

● DECS03-BLU
● DECS03-GRY

D16.4 H7 cm | 24.6 cl
[6]



Coffee cup and saucer 8 cl

● DECS04-BLU
● DECS04-GRY

D12 H6.6 cm | 7.6 cl
[6]



Mini jug/creamer 14 cl

● DEZ091-BLU
● DEZ091-GRY

8.5 x 7.2 H7.9 cm | 14.4 cl
[1]

Available in Blue and Grey



Serving bowl 24

- DES241-BLU
- DES241-GRY

D24.3 H12.8 cm | 260.5 cl
[1]



Rect. tray 40

- BOR401-BLU
- BOR401-GRY

40.4 x 24 H3.4 cm
[1]



Rect. tray 34

- BOR341-BLU
- BOR341-GRY

33.5 x 17.5 H2.7 cm
[1]



Rect. tray 27

- BOR271-BLU
- BOR271-GRY

27.2 x 10.8 H2.2 cm
[1]



Cylinder vase 30

- NAV301-BLU

D9 H29.9 cm | 150.8 cl
[1]



Cylinder vase 25

- NAV251-BLU

D9 H24.7 cm | 106.5 cl
[1]

MARRAKESH



Designed by the French floral artist Christian Tortu, the Marrakesh collection harmoniously blends sustainable craftsmanship, nature's essence, and Moroccan mystique.

PHOTOGRAPHED IN **CASA AZUL, MELIDES**







Beyond its harmoniously beautiful design, what truly makes Marrakesh remarkable is its commitment to sustainability. Crafted by skilled artisans from ecogres, Costa Nova's innovative recycled clay, each piece is a fusion of artistic excellence and eco-consciousness.



Recycled stoneware, glossy glaze (interior and exterior - SBL, EUC, CAN and CMN), matte glaze (interior - CIE), unglazed (exterior). Steel (plate holder and riser). Made in Portugal.











Dinner plate 28

○ 2KEP281E-SBL

D27.6 H3.4 cm
[6]



Salad/dessert plate 22

○ 2KEP221E-SBL

D22 H3.4 cm
[6]



Appetizer plate 19

○ 2KEP191E-SBL

D18.8 H3.2 cm
[6]



Soup/pasta plate 23

○ 2IHP232-SBL

D23.4 H6.1 cm | 110.8 cl
[6]



Soup/pasta plate 22

○ 2VGP221-SBL

D21.9 H5.1 cm | 104.8 cl
[6]



Soup/cereal bowl 15

○ 2VGS151-SBL

D15.2 H6.5 cm | 60.3 cl
[6]



Fruit bowl 12

○ 2VGS121-SBL

D12 H5 cm | 27 cl
[6]



Dip bowl 10

○ 2VGN101-SBL

D10 H4 cm | 13 cl
[6]



Dip dish 7

○ 2COD071-SBL

D7.2 H2.1 cm
[6]



Mug 44 cl

○ 2BLC141-SBL

13.5 x 9.8 H10.9 cm | 43.5 cl
[6]



Tea cup 17 cl

○ 2BLC091-SBL

D7.4 H8.7 cm | 17 cl
[6]



Coffee cup 8 cl

○ 2BLC071-SBL

D5.9 H6.9 cm | 7.5 cl
[6]

COSTA NOVA — STONEWARE — MARRAKESH

Available in Sable Blanc, Eucalyptus, Cannelle, Cumin and Ciel



Serving bowl 26

○ 2VGS261-SBL

D26.1 H8 cm | 270 cl
[2]



Cov. casserole 15

○ 2VGH151-SBL

D15.2 H8.5 cm | 50 cl
[6]



Cov. casserole 12

○ 2VGH121-SBL

D12 H8.8 cm | 20 cl
[6]



Pitcher 237 cl

○ 2NAZ261-SBL

18.6 x 14.5 H26.1 cm | 236.5 cl
[1]



Dinner plate 28

● 2KEP281E-EUC

D27.6 H3.4 cm
[6]



Salad/dessert plate 22

● 2KEP221E-EUC

D22 H3.4 cm
[6]



Appetizer plate 19

● 2KEP191E-EUC

D18.8 H3.2 cm
[6]



Soup/pasta plate 23

● 2IHP232-EUC

D23.4 H6.1 cm | 110.8 cl
[6]



Soup/cereal bowl 15

● 2VGS151-EUC

D15.2 H6.5 cm | 60.3 cl
[6]



Fruit bowl 12

● 2VGS121-EUC

D12 H5 cm | 27 cl
[6]



Dip bowl 10

● 2VGN101-EUC

D10 H4 cm | 13 cl
[6]



Banana leaf 53

● 2ELA531E-EUC

52.7 x 16 H2.9 cm
[2]



Monstera leaf 27

● 2ELA271E-EUC

26.6 x 19.7 H2.8 cm
[2]



Salad/dessert plate 22

● 2KEP221E-CAN

D22 H3.4 cm
[6]



Appetizer plate 19

● 2KEP191E-CAN

D18.8 H3.2 cm
[6]



Soup/cereal bowl 15

● 2VGS151-CAN

D15.2 H6.5 cm | 60.3 cl
[6]



Fruit bowl 12

● 2VGS121-CAN

D12 H5 cm | 27 cl
[6]



Dip bowl 10

● 2VGN101-CAN

D10 H4 cm | 13 cl
[6]



Cov. casserole 15

● 2VGH151-CAN

D15.2 H8.5 cm | 50 cl
[6]



Cov. casserole 12

● 2VGH121-CAN

D12 H8.8 cm | 20 cl
[6]



Salad/dessert plate 22

● 2KEP221E-CMN

D22 H3.4 cm
[6]



Appetizer plate 19

● 2KEP191E-CMN

D18.8 H3.2 cm
[6]



Soup/cereal bowl 15

● 2VGS151-CMN

D15.2 H6.5 cm | 60.3 cl
[6]



Fruit bowl 12

● 2VGS121-CMN

D12 H5 cm | 27 cl
[6]



Dip bowl 10

● 2VGN101-CMN

D10 H4 cm | 13 cl
[6]



Salad/dessert plate 22

● 2KEP221E-CIE

D22 H3.4 cm
[6]



Appetizer plate 19

● 2KEP191E-CIE

D18.8 H3.2 cm
[6]



Soup/cereal bowl 15

● 2VGS151-CIE

D15.2 H6.5 cm | 60.3 cl
[6]



Fruit bowl 12

● 2VGS121-CIE

D12 H5 cm | 27 cl
[6]



Dip bowl 10

● 2VGN101-CIE

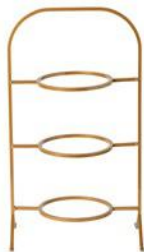
D10 H4 cm | 13 cl
[6]



2 Salad plates holder

O30398-GLD

27 x 15 H33 cm
[1]



3 Appetizer plates holder

O30397-GLD

24 x 15 H43.5 cm
[1]



2 Appetizer plates holder

O30396-GLD

24 x 15 H31.8 cm
[1]



Low metallic riser 28

O30399-GLD

27.5 x 10.4 H8 cm
[3]

NÓTOS



For his first collaboration with Costa Nova, the renowned German designer Carsten Gollnick took inspiration from the aesthetic world of Portuguese Atlantic coast, and created a distinctive tableware collection in fine stoneware. The remarkable color contrasts and structures of the Portuguese Atlantic coast, especially the border between water and land, was his source of inspiration.



The light, sandy beige color of “dune path” (DNP) engage in perfect dialogue with the very deep, shining tone of “latitude black” (LTB), inspired by the Atlantic.

Handcrafted pieces featuring two contrasting glazes and textured surfaces that elevate all our senses.

Fine stoneware, glossy glaze (DNP), matte glaze (LTB). Beech wood (salt/pepper mill). Smoked cork (placemat). Made in Portugal.





Available in Dune Path and Latitude Black



Charger plate/platter 30

- NRP301-DNP
- NRP301-LTB

D29.7 H2.4 cm
[6]



Dinner plate 28

- NRP281-DNP
- NRP281-LTB

D27.6 H2.4 cm
[6]



Salad/dessert plate 24

- NRP241-DNP
- NRP241-LTB

D23.8 H2.3 cm
[6]



Salad/dessert plate 20

- NRP201-DNP
- NRP201-LTB

D19.9 H2.4 cm
[6]



Appetizer plate 17

- NLP171-DNP
- NLP171-LTB

D17.2 H2.1 cm
[6]



Soup/pasta bowl 20

- NSS201-DNP
- NSS201-LTB

D19.9 H5.1 cm | 94.5 cl
[6]



Soup/cereal bowl 16

- NSS161-DNP
- NSS161-LTB

D16.1 H9.1 cm | 105 cl
[6]



Fruit bowl 14

- NSS141-DNP

D14.1 H6.1 cm | 51.9 cl
[6]



Fruit bowl 12

- NSS121-LTB

D12 H6 cm | 35 cl
[6]



Dip dish 7

- NSN072-DNP
- NSN072-LTB

D7 H5.1 cm | 9.4 cl
[6]



Cup 27 cl

- NRC111-DNP
- NRC111-LTB

D8.1 H10.6 cm | 27 cl
[6]



Cup 16 cl

- NRC083-DNP
- NRC083-LTB

D7.6 H7 cm | 16 cl
[6]



Cup 7 cl

- NRC061-DNP
- NRC061-LTB

D6 H6.1 cm | 7.4 cl
[6]



Mug 28 cl

- NRC121-DNP
- NRC121-LTB

10.5 x 8 H11.9 cm | 28 cl
[6]



Tea cup and saucer 20 cl

- NRC001-DNP
- NRC001-LTB

D14.8 cm H6.9 cm | 20 cl
[6]



Pour over coffee dripper 12

- NSD121-DNP
- NSD121-LTB

D12 H9.9 cm | 32 cl
[1]

Available in Dune Path and Latitude Black



Serving bowl 25

- NSS251-DNP
- NSS251-LTB

D24.8 H10.6 cm | 312 cl
[1]



Cov. casserole 17

- NSSS01-DNP
- NSSS01-LTB

D16.7 H11.2 cm | 105 cl
[1]



Square serving plate 31

- NRQ311-DNP
- NRQ311-LTB

31 x 28.5 H2.2 cm
[6]



Square plate/tray 22

- NRQ221-DNP
- NRQ221-LTB

22.4 x 20.7 H2 cm
[6]



Oval platter 37

- NSA371-DNP
- NSA371-LTB

36.5 x 20.5 H3.1 cm
[6]



Deep oval tray 25

- NSA251-LTB

25.4 x 9.3 H4.8 cm | 56.5 cl
[6]



Deep oval tray 19

- NSA181-DNP

18.5 x 9.4 H4.8 cm | 37.7 cl
[6]



Oval tray 35

- NSA351-DNP
- NSA351-LTB

35.4 x 9.6 H2.6 cm
[6]



Oval tray 25

- NSA252-LTB

25.3 x 9.5 H2.7 cm
[6]



Oval tray 19

- NSA182-LTB

18.6 x 9.6 H2.7 cm
[6]



Salt/pepper mill 7 cl

- NSD081-DNP

D7.9 H11.7 cm | 7 cl
[1]



Cork placemat 36

O30240-SMK

D36 cm
[12]

Nótos Color chart ○ Dune Path — White ● Latitude Black — Black

NOVA



Inspired by Nature's organic shapes of the natural world and the cycle of life, Nova seeks to capture movement in fine stoneware. The pieces are inspired by seashells and tree bark and like these objects found in nature, they possess the ability to change their appearance depending on the time of day and the angle of the light.

Fine stoneware, glossy glaze. Made in Portugal.



Available in White, Turquoise, Denim, Sand Grey and Black



Charger plate/platter 33

○ NOP331-WHE ● NOP331-TRQ
● NOP331-DEN ● NOP331-SNG

D32.7 H3.4 cm
[6]



Dinner plate 27

○ NOP273-WHE ● NOP273-TRQ
● NOP273-DEN ● NOP273-SNG

D27.2 H3.8 cm
[6]



Soup/pasta plate 26

○ NOP251-WHE ● NOP251-TRQ
● NOP251-DEN ● NOP251-SNG

D25.5 H4.6 cm | 78.5 cl
[6]



Salad/dessert plate 21

○ NOP216-WHE ● NOP216-TRQ
● NOP216-DEN ● NOP216-SNG

D21.1 H3.1 cm
[6]



Appetizer plate 16

○ NOP161-WHE ● NOP161-TRQ
● NOP161-DEN ● NOP161-SNG

D16.3 H2.4 cm
[6]



Appetizer dish 14

○ NOP141-WHE

D13.5 H3.6 cm
[6]



Soup/cereal bowl 16

○ NOS151-WHE ● NOS151-TRQ
● NOS151-DEN ● NOS151-SNG

D15.8 H8.1 cm | 52.1 cl
[6]



Fruit bowl 12

○ NOS121-WHE ● NOS121-TRQ
● NOS121-DEN ● NOS121-SNG

D11.5 H7 cm | 27.1 cl
[6]



Square bowl 11

○ NON121-WHE ● NON121-TRQ
● NON121-DEN ● NON121-SNG

11.2 x 11.2 H6.1 cm | 33.5 cl
[6]



Ramekin/butter dish 6

○ NON061-WHE

D5.8 H3.5 cm | 3.4 cl
[6]



Footed bowl 13

○ NOS131-WHE

D13.2 H8.9 cm | 47.7 cl
[6]

Available in White, Turquoise, Denim, Sand Grey and Black



Mug 36 cl

○ NOC121-WHE ● NOC121-TRQ
● NOC121-DEN ● NOC121-SNG
● NOC121-BLK

12.4 x 9 H11.5 cm | 36 cl
[6]



Tea cup and saucer 19 cl

○ NOCS01-WHE ● NOCS01-TRQ
● NOCS01-DEN ● NOCS01-SNG
● NOCS01-BLK

D15.8 H8 cm | 19.1 cl
[6]



Coffee cup and saucer 7 cl

○ NOCS02-WHE ● NOCS02-TRQ
● NOCS02-DEN ● NOCS02-SNG

D12.3 H6.3 cm | 7 cl
[6]



Coffee cup and saucer 7 cl

● NOCS06-BLK

D12.3 H6.3 cm | 7 cl
[6]



Tea pot 107 cl

○ NOX241-WHE
● NOX241-TRQ

24.2 x 14.2 H15.1 cm | 107 cl
[1]



Tea pot 51 cl

○ NOX191-WHE
● NOX191-TRQ

19.3 x 11.2 H11.9 cm | 50.5 cl
[1]



Creamer 21 cl

○ LSZ131-WHE
● LSZ131-TRQ

12.7 x 8.2 H8.4 cm | 20.5 cl
[1]



Sugar bowl 21 cl

○ LSX101-WHE
● LSX101-TRQ

D8.4 H10.3 cm | 20.5 cl
[1]



Oval platter 40

○ NOA401-WHE
● NOA401-TRQ

40 x 28.3 H4.5 cm
[1]



Oval platter 29

○ NOA302-WHE ● NOA302-TRQ
● NOA302-DEN ● NOA302-SNG

29 x 21.4 H3.1 cm
[1]



Oval platter 20

○ NOA201-WHE
● NOA201-TRQ

20 x 14.5 H3 cm
[2]



Serving bowl 26

○ NOS261-WHE ● NOS261-TRQ
● NOS261-DEN ● NOS261-SNG

D25.7 H12.6 cm | 281.8 cl
[1]



Serving bowl 19

○ NOS192-WHE ● NOS192-TRQ
● NOS192-DEN ● NOS192-SNG

D19 H8.3 cm | 101.5 cl
[6]



Pitcher 193 cl

○ NOZ241-WHE
● NOZ241-TRQ

23 x 13.8 H24.3 cm | 193 cl
[1]

Available in White, Turquoise, Denim, Sand Grey and Black



Tiered stand w/ two trays 37

○ NORS01-WHE

40 x 15.5 H34 cm
[1]



Rect. tray 37

○ NOR371-WHE

37.2 x 13.7 H3.3 cm
[1]



Divided dish 20

○ NOR201-WHE

19.9 x 10 H3 cm
[4]



Pie dish 30

○ NOT301-WHE

● NOT301-TRQ

D29.6 H4.6 cm | 142.5 cl
[1]



Footed plate 33

○ NOP332-WHE

D33.4 H12.6 cm
[1]



Footed plate 26

○ NOP262-WHE

● NOP262-TRQ

D26.3 H5.6 cm
[1]



Oval baker 30

○ NOA301-WHE

● NOA301-TRQ

30.4 x 22.3 H7.5 cm | 240 cl
[1]



Rect. baker 36

○ NOR351-WHE

● NOR351-TRQ

35.5 x 25.6 H7.7 cm | 399.5 cl
[1]



Rect. baker 26

○ NOR251-WHE

● NOR251-TRQ

25.7 x 18.6 H6.8 cm | 167.5 cl
[1]



Party bucket 32

○ NOD321-WHE ● NOD321-DEN

● NOD321-BLK

32.3 x 24.4 H21.1 cm | 698 cl
[1]



OUR COFFEE STORY

Coffee has a deep-rooted history in Portugal, dating back to the 18th century. The café culture in Portugal is about more than just the coffee itself; it's about socializing, spending time with friends, and enjoying the relaxed atmosphere of the local cafés. It's a cherished tradition deeply ingrained in the Portuguese way of life.

At Costa Nova, we hold a deep appreciation for coffee's global significance in various cultures throughout history. Over the years, we've crafted a wide array of coffee cups in diverse shapes, colors, and collections to celebrate every coffee moment.





Our coffee story

Celebrating every coffee moment

Left to right: Grespresso Nature. Grespresso Ecogres. Grespresso. Nova.



At Costa Nova, we believe that some of life's most memorable moments happen around the table. Coffee, as the centerpiece of these moments, inspired us to create a diverse range of coffee cups, which now grace tables in homes worldwide. In 2018, we proudly introduced the Grespresso Collection, offering a variety of coffee cups in an



array of colors. In 2022, we unveiled the highly sustainable Grespresso Ecogres collection.

Looking ahead, we're thrilled to announce our continued expansion of our coffee selection, presenting an even wider array of collections, colors, materials, and options to enhance your coffee experience.

Recycled (Grespresso Nature and Grespresso Ecogres) and Fine Stoneware (Grespresso and Nova) collections. Made in Portugal.

ARENITO



Handcrafted from Costa Nova's innovative recycled clay formula, ecogres, Arenito perfectly marries practical design with a deep dedication to eco-friendliness. Explore Arenito to find a delightful selection of espresso and lungo cups, expertly crafted in six calming shades. Each piece features a velvety interior matte glaze, retaining its unglazed underside for a unique and artisanal charm that graces the entire collection.

Available in Champagne yellow, Aqua, Mauve rose, Sage green, Olive green and Charcoal grey



**Gift box 8 espresso cups
multicolor**

2LNC001-MLT
16.7 x 15.5 H11.4 cm
[1]



**Gift box 8 lungo cups
multicolor**

2LNC002-MLT
19.8 x 19.3 H14.3 cm
[1]



**Champagne yellow
Espresso cup 7 cl**

2LNC062-CHM
D6 H4.9 cm | 6.5 cl
[6]



**Aqua
Espresso cup 7 cl**

2LNC062-AQU
D6 H4.9 cm | 6.5 cl
[6]

Lungo cup 20 cl

2LNC092-CHM
D8.7 H6.6 cm | 20 cl
[6]

Lungo cup 20 cl

2LNC092-AQU
D8.7 H6.6 cm | 20 cl
[6]



**Mauve Rose
Espresso cup 7 cl**

2LNC062-PNK
D6 H4.9 cm | 6.5 cl
[6]



**Sage green
Espresso cup 7 cl**

2LNC062-GRN
D6 H4.9 cm | 6.5 cl
[6]



**Olive green
Espresso cup 7 cl**

2LNC062-OLV
D6 H4.9 cm | 6.5 cl
[6]



**Charcoal grey
Espresso cup 7 cl**

2LNC062-CHR
D6 H4.9 cm | 6.5 cl
[6]

Lungo cup 20 cl

2LNC092-PNK
D8.7 H6.6 cm | 20 cl
[6]

Lungo cup 20 cl

2LNC092-GRN
D8.7 H6.6 cm | 20 cl
[6]

Lungo cup 20 cl

2LNC092-OLV
D8.7 H6.6 cm | 20 cl
[6]

Lungo cup 20 cl

2LNC092-CHR
D8.7 H6.6 cm | 20 cl
[6]

Gift box 8 espresso / lungo cups

Includes 2 espresso / lungo cups in champagne yellow and sage green and 1 espresso / lungo cup in aqua, mauve rose, olive green and charcoal grey.

Recycled stoneware, matte glaze (interior), unglazed (exterior). Made in Portugal.

GRESPRESSO



The beautiful Grespresso collection allows a broad range of applications, from coffee cups to miniatures or as decorative items. Available in both espresso and lungo cups, Grespresso is so much more than a coffee cup.

Fine stoneware, glossy glaze. Made in Portugal.

Grespresso Gift Boxes available in Multicolor, White and Denim



Wooden box 40 espresso cups

LSCS08-MLT

Box: 38 x 29.2 H11.9 cm
[1]



Wooden box 24 lungo cups

LSCS09-MLT

Box: 37 x 28.5 H14.3 cm
[1]



**Gift box 8 espresso cups
White**

LSCS11-WHI

Box: 16.7 x 15.5 H11.4 cm
[1]



**Gift box 8 lungo cups
White**

LSCS12-WHI

Box: 19.8 x 19.3 H14.3 cm
[1]

Grespresso Espresso and Lungo Cups available in White, Aqua, Grey, Soft Pink and Yellow



White

Espresso cup 7 cl

LSC061-WHI

D6.5 H5.8 cm | 7 cl
[6]



Aqua

Espresso cup 7 cl

LSC061-AQA

D6.5 H5.8 cm | 7 cl
[6]



Grey

Espresso cup 7 cl

LSC061-GRY

D6.5 H5.8 cm | 7 cl
[6]



Soft pink

Espresso cup 7 cl

LSC061-PNK

D6.5 H5.8 cm | 7 cl
[6]

Lungo cup 19 cl

LSC081-WHI

D8 H7.5 cm | 19.1 cl
[6]

Lungo cup 19 cl

LSC081-AQA

D8 H7.5 cm | 19.1 cl
[6]

Lungo cup 19 cl

LSC081-GRY

D8 H7.5 cm | 19.1 cl
[6]

Lungo cup 19 cl

LSC081-PNK

D8 H7.5 cm | 19.1 cl
[6]



Yellow

Espresso cup 7 cl

LSC061-YLW

D6.5 H5.8 cm | 7 cl
[6]

Lungo cup 19 cl

LSC081-YLW

D8 H7.5 cm | 19.1 cl
[6]

Wooden box 40 espresso cups

Includes wooden display box, 4 espresso cups of each color.

Wooden box 24 lungo cups

Includes wooden display box, 3 lungo cups in white, grey, denim and aqua and 2 lungo cups in black, turquoise, hunter green, soft pink, red and yellow.

Grespresso Gift Boxes available in Multicolor, White and Denim



**Gift box 8 espresso cups
Multicolor**
LSCS11-MLT
Box: 16.7 x 15.5 H11.4 cm
[1]



**Gift box 8 lungo cups
Multicolor**
LSCS12-MLT
Box: 19.8 x 19.3 H14.3 cm
[1]



**Gift box 8 espresso cups
Denim**
LSCS11-DEN
Box: 16.7 x 15.5 H11.4 cm
[1]



**Gift box 8 lungo cups
Denim**
LSCS12-DEN
Box: 19.8 x 19.3 H14.3 cm
[1]

Grespresso Espresso and Lungo Cups available in Red, Denim, Turquoise, Hunter Green and Black



**Red
Espresso cup 7 cl**
LSC061-RED
D6.5 H5.8 cm | 7 cl
[6]



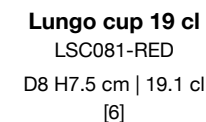
**Denim
Espresso cup 7 cl**
LSC061-DEN
D6.5 H5.8 cm | 7 cl
[6]



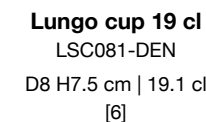
**Turquoise
Espresso cup 7 cl**
LSC061-TRQ
D6.5 H5.8 cm | 7 cl
[6]



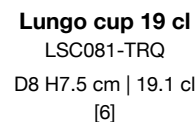
**Hunter green
Espresso cup 7 cl**
LSC061-HNG
D6.5 H5.8 cm | 7 cl
[6]



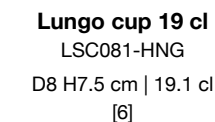
Lungo cup 19 cl
LSC081-RED
D8 H7.5 cm | 19.1 cl
[6]



Lungo cup 19 cl
LSC081-DEN
D8 H7.5 cm | 19.1 cl
[6]



Lungo cup 19 cl
LSC081-TRQ
D8 H7.5 cm | 19.1 cl
[6]



Lungo cup 19 cl
LSC081-HNG
D8 H7.5 cm | 19.1 cl
[6]



**Black
Espresso cup 7 cl**
LSC061-BLK
D6.5 H5.8 cm | 7 cl
[6]

Lungo cup 19 cl
LSC081-BLK
D8 H7.5 cm | 19.1 cl
[6]

Gift box 8 espresso / lungo cups

Includes 1 espresso / lungo cup of each color, except red and hunter green.



GRESpresso ECOGRES



Crafted from recycled stoneware, Grespresso Ecogres stands as a sensory and eco-conscious collection of espresso cups. Drawing inspiration from the world's diverse crafts and cultures, each cup boasts hand-finished patterns that highlight the tactile and artistic essence of the collection. We're expanding our Grespresso Ecogres collection with 'World of Coffee,' introducing three distinctive designs inspired by Vietnam, Kenya, and Colombia. This collection not only pays homage to the history of coffee but also aligns with our steadfast commitment to sustainability.

WORLD OF COFFEE



Gift box 8 espresso cups
White Vietnam
 1EXCS01E-WVT
 Box: 16.7 x 15.5 H11.4 cm
 [1]



Gift box 8 espresso cups
White Kenya
 1EXCS02E-WKN
 Box: 16.7 x 15.5 H11.4 cm
 [1]



Gift box 8 espresso cups
White Colombia
 1EXCS03E-WCL
 Box: 16.7 x 15.5 H11.4 cm
 [1]



White Vietnam
Espresso cup 7 cl
 1EXC061E-WVT
 D6.6 H6 cm | 7 cl
 [6]



White Kenya
Espresso cup 7 cl
 1EXC062E-WKN
 D6.6 H6 cm | 7 cl
 [6]



White Colombia
Espresso cup 7 cl
 1EXC063E-WCL
 D6.6 H6 cm | 7 cl
 [6]

ORIGINAL



Gift box 8 espresso cups
 1TTC01E-WHI
 Box: 16.7 x 15.5 H11.4 cm
 [1]



Espresso cup 7 cl
 1TTC061E-WHI
 D6.5 H6 cm | 7 cl
 [6]



Espresso cup 7 cl
 1TTC062E-WHI
 D6.5 H6 cm | 7 cl
 [6]



Espresso cup 7 cl
 1TTC063E-WHI
 D6.5 H6 cm | 7 cl
 [6]



Espresso cup 7 cl
 1TTC064E-WHI
 D6.5 H6 cm | 7 cl
 [6]

Grepreso Ecogres World of Coffee Recycled stoneware, glossy glaze. Handcrafted pieces, available in three different patterns. Made in Portugal.
Grepreso Ecogres Original Recycled stoneware, glossy glaze (interior), matte glaze (exterior). Handcrafted pieces, available in four different patterns. Made in Portugal.

GRESPRESSO

NATURE



This eco-friendly trio was designed with sustainability in mind. Grespresso Nature features three espresso cups and three lungo cups, each beautifully presented in three colors. What sets these cups apart is their unique combination of raw materials and of unglazed and glazed surfaces. Two of these cups are made of ecogres, while the third is made from stoneware, recognized as one of the most sustainable ceramics globally.

This trio will pleasantly surprise guests with a touch of contemporary good taste.



Gift box 8 espresso cups

Multicolor

LSCS14-MLT

Box: 16.7 x 15.5 H11.4 cm

[1]



Gift box 8 lungo cups

Multicolor

LSCS15-MLT

Box: 19.8 x 19.3 H14.3 cm

[1]



Slate-White

Espresso cup 7 cl

1LSC062-WSL

D6.5 H5.8 cm | 7 cl

[6]



Natural-White

Espresso cup 7 cl

LSC062-WNT

D6.5 H5.8 cm | 7 cl

[6]



Sand-White

Espresso cup 7 cl

2LSC062-WSN

D6.5 H5.8 cm | 7 cl

[6]

Lungo cup 19 cl

1LSC081-WSL

D8 H7.5 cm | 19.1 cl

[6]

Lungo cup 19 cl

LSC081-WNT

D8 H7.5 cm | 19.1 cl

[6]

Lungo cup 19 cl

2LSC081-WSN

D8 H7.5 cm | 19.1 cl

[6]

Gift box 8 espresso/lungo cups

Includes 3 espresso/lungo cups in slate-white and sand-white and 2 espresso/lungo cups in natural-white.

Recycled stoneware, glossy glaze (interior), unglazed (exterior). Handcrafted pieces, available in three different colors. Made in Portugal.

NOVA BLACK



The black color of the Nova collection celebrates the opening of the first Costa Nova Café, in Aveiro (Portugal) as a special edition.

This curated selection of pieces presents a glossy black glaze, and adds a bold, impactful feel to this iconic collection.

Fine stoneware, glossy glaze. Made in Portugal.



Mug 36 cl

● NOC121-BLK

12.4 x 9 H11.5 cm | 36 cl
[6]



Tea cup and saucer 19 cl

● NOCS01-BLK

D15.8 H8 cm | 19 cl
[6]



Coffee cup and saucer 7 cl

● NOCS06-BLK

D12.3 H6.3 cm | 7 cl
[6]

& OTHER COFFEE CUPS



We've gathered an assortment of coffee cups from our diverse stoneware collections and assembled them within this section.

Just as in Portugal, where you can savor coffee in various ways like 'bica' (a stronger espresso), or 'pingo' (an even smaller coffee with a drop of milk), or 'meia de leite' (coffee with milk), our selection of cups offers a variety of styles and shapes to suit your preferences.





Alentejo

Coffee cup and saucer 9 cl

○ TCS02-WHT ● TCS02-TRQ

D14.5 H6.2 cm | 9 cl
[6]



Augusta

Coffee cup and saucer 8 cl

COCS02-NAB

D13.4 H6.1 cm | 8.3 cl
[6]



Beja

Coffee cup and saucer 8 cl

● ATCS02-CRM ● ATCS02-BLU
● ATCS02-RED

D12.5 H6.4 cm | 8 cl
[6]



Brisa

Coffee cup and saucer 7 cl

● LNCS03-SAL ● LNCS03-RIA

D12.5 H5.3 cm | 7 cl
[6]



Friso

Cappuccino cup 19 cl

FIC101-WHI

10.3 x 7.4 H8.2 cm | 18.5 cl
[6]



Friso

Coffee cup and saucer 9 cl

FICS02-WHI

D12.4 H5.3 cm | 8.6 cl
[6]



Lagoa

Coffee cup and saucer 9 cl

● LOCS03-MTL ● LOCS03-PDR

D12.5 H6.5 cm | 8.6 cl
[6]



Lagoa Ecogres

Coffee cup and saucer 9 cl

○ 1LOCS03-WHI ● 1LOCS03-BLK

D12.5 H6.5 cm | 8.6 cl
[6]



Luzia

Coffee cup and saucer 7 cl

○ PECS11-CLW ● PECS11-ASH

D13 H6.5 cm | 7 cl
[6]



Madeira

Coffee cup and saucer 8 cl

● DECS04-BLU ● DECS04-GRY

D12 H6.6 cm | 7.6 cl
[6]



Marrakesh

Coffee cup 3 fl oz

○ 2BLC071-SBL

D2 3/8" H2 3/4" | 2 1/2 fl oz
2400575.6



Nótos

Cup 27 cl

○ NRC111-DNP ● NRC111-LTB

D8.1 H10.6 cm | 27 cl
[6]



Nótos

Cup 16 cl

○ NRC083-DNP ● NRC083-LTB

D7.6 H7 cm | 16 cl
[6]



Nótos

Cup 7 cl

○ NRC061-DNP ● NRC061-LTB

D6 H6.1 cm | 7.4 cl
[6]



Nótos

Pour over coffee dripper 12

○ NSD121-DNP ● NSD121-LTB

D12 H9.9 cm | 32 cl
[1]



Please consult the specific information about the pieces featured on the pages of their respective collections.





Nova

Coffee cup and saucer 7 cl

○ NOCS02-WHE ● NOCS02-TRQ
● NOCS02-DEN ● NOCS02-SNG

D12.3 H6.3 cm | 7 cl
[6]



Pearl

Coffee cup and saucer 8 cl

PECS05-WHI

D12.7 H5.3 cm | 8 cl
[6]



Plano

Coffee cup 8 cl

1POC091-WHI

8.5 x 6.5 H5.8 cm | 8 cl
[6]



Plano

Dip dish/saucer 13

1POP131-WHI

D13.3 H2 cm
[6]



Redonda

Coffee cup 7 cl

○ RNC071-WHI ● RNC071-GRN
● RNC071-BRN

7.3 x 5.1 H7 cm | 6.5 cl
[6]



Redonda

Coffee saucer 13

○ RNP133-WHI ● RNP133-GRN
● RNP133-BRN

D12.5 H1.5 cm
[6]



Riviera

Coffee cup and saucer 8 cl

ATCS04-FRT

D12.5 H6.4 cm | 8 cl
[6]



Roda

Container/cup 8 cl

RTC061-BRA

D5.9 H6.1 cm | 7.8 cl
[6]



Roda

Espresso cup 8 cl

RTC081-BRA

D7.7 H6.1 cm | 7.8 cl
[6]



Roda

Espresso saucer 11

RTP111-BRA

D10.8 H1.5 cm
[6]

PEARL



The Pearl collection was inspired by the richness of 18th and 19th century European ceramics. The round shapes, beautifully embossed with a beaded edge were reinvented to create a new classic concept, bringing a touch of European traditional elegance to the table that will never go out of style.

PHOTOGRAPHED IN **QUINTA DA COMPORTA, COMPORTA**







The large beads that adorn the collection are hand-brushed for a handcrafted look and feel.

A reinvented design allows the collection to stand out whether the style or the occasion.

Fine stoneware, glossy glaze. Made in Portugal.



Charger plate/platter 34
PEP331-WHI

D34.3 H3.3 cm
[6]



Dinner plate 28
PEP282-WHI

D28.4 H3.2 cm
[6]



Soup/pasta plate 24
PEP241-WHI

D24.2 H4.1 cm | 61.3 cl
[6]



Salad/dessert plate 22
PEP222-WHI

D22 H2.4 cm
[6]



Appetizer plate 17
PEP173-WHI

D17 H2.4 cm
[6]



Pasta bowl 24
PEP231-WHI

D23.6 H5.6 cm | 105 cl
[6]



Soup/cereal bowl 17
PES161-WHI

D16.5 H8.4 cm | 80 cl
[6]



Low bowl 15
PES152-WHI

D14.6 H6 cm | 36 cl
[6]



Fruit bowl 14
PES131-WHI

D13.6 H6.9 cm | 41.8 cl
[6]



Mini bowl 11
PEN111-WHI

D10.5 H3.1 cm | 7.2 cl
[6]



Mug 37 cl
PEC131-WHI

12.7 x 9.1 H10.1 cm | 37 cl
[6]



Tea cup and saucer 25 cl
PECS04-WHI

D17.1 H7.4 cm | 25 cl
[6]



Coffee cup and saucer 8 cl
PECS05-WHI

D12.7 H5.3 cm | 8 cl
[6]



Pitcher 258 cl
PEZ271-WHI

20.3 x 16.9 H26.8 cm | 258 cl
[1]



Oval platter 51
PEA501-WHI

51 x 37.1 H5.8 cm
[1]



Oval platter 41
PEA401-WHI

40.8 x 30 H4.3 cm
[1]



Oval platter 34
PEA331-WHI

34.2 x 25 H3.5 cm
[1]



Pasta/serving bowl 34
PES341-WHI

D34.1 H7 cm | 291 cl
[1]



Serving bowl 27
PES271-WHI

D26.8 H13.7 cm | 393 cl
[1]



Rect. platter 40
PER403-WHI

39.6 x 28 H4.3 cm
[1]



Rect. platter 30
PER302-WHI

30.4 x 21.1 H3.8 cm
[1]



Rect. tray 30
PER301-WHI

30.2 x 13.2 H2.1 cm
[6]



Footed plate 34
PEP334-WHI

D34 H12.8 cm
[1]



Footed plate 28
PEP286-WHI

D28.4 H12.9 cm
[1]



Footed plate 22
PEP226-WHI

D22 H11.7 cm
[1]



Centerpiece 34
PEPS01-WHI

D34.3 H33.5 cm
[1]



Centerpiece 32
PED321-WHI

D32.2 H16.1 cm | 525 cl
[1]



Rect. baker 38
PER381-WHI

38.3 x 24.1 H8.3 cm | 390 cl
[1]



Rect. baker 33
PER333-WHI

32.7 x 20.6 H7.3 cm | 244.2 cl
[1]



Rect. baker 27
PER271-WHI

27.3 x 17.3 H6.2 cm | 133.9 cl
[1]

PLANO



Sourced from the surplus of our own factory production, Plano is the first recycled collection by Costa Nova. All Costa Nova collections are produced with respect for nature — reusable and recyclable. Plano goes even further ahead, telling a unique story of how tableware can be made of recycled materials, completely eco-friendly, while remaining beautiful and functional at the same time.

Recycled stoneware, glossy glaze (interior), unglazed (exterior). Cork/recycled EVA (placemats and coasters). Oak wood (boards). Steel (holder and stand).
Made in Portugal.









Dinner plate 29
1POP292e-WHI

D28.9 H2.2 cm
[6]



Salad/dessert plate 23
1POP231e-WHI

D23 H2 cm
[6]



Appetizer plate 16
1POP152-WHI

D15.5 H2.1 cm
[6]



Presentation plate/cover 16
1POD161-WHI

D15.5 H2.8 cm
[6]



Pasta bowl 25
1POP251e-WHI

D25 H5.3 cm | 77 cl
[6]



Soup/cereal bowl 18
1POS181-WHI

D17.6 H7.5 cm | 47 cl
[6]



Low bowl 17
1POS171-WHI

D17.4 H4.4 cm | 27 cl
[6]



Round ramekin 9
1ATN092-WHI

D8.9 H5.1 cm | 11.5 cl
[6]



Mug 35 cl
1POC131-WHI

12.7 x 8.9 H11.5 cm | 35.4 cl
[6]



Tea cup 19 cl
1POC111-WHI

10.6 x 8.6 H7.4 cm | 18.8 cl
[6]



Dip dish/saucer 15
1POP151-WHI

D15.3 H2.2 cm
[6]



Coffee cup 8 cl
1POC091-WHI

8.5 x 6.5 H5.8 cm | 8 cl
[6]



Dip dish/saucer 13
1POP131-WHI

D13.3 H2 cm
[6]



Oval platter 40
1POA401e-WHI

40.3 x 30.1 H3.8 cm
[1]



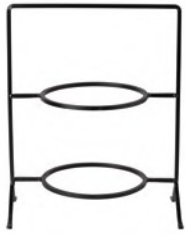
Serving bowl 30
1POS301e-WHI

D30 H10.5 cm | 245 cl
[1]



Vase 30
1POV301-WHI

9.2 x 9.1 H29.8 cm | 152.8 cl
[1]



2 Plate holder
O30176-MTB

27.4 x 17.5 H33.9 cm
[1]



Tiered stand w/ two trays 37
1PORS01e-WHI

40.3 x 14 H33.8 cm
[1]



Rect. tray 37
1POR371e-WHI

37.3 x 14.5 H2.9 cm
[1]



Oct. baker 35 w/ metallic holder
1POR352e-WHI

42.5 x 25.5 H8 cm | 322.5 cl
[1]



Oct. baker 35
1POR351e-WHI

35.3 x 25.8 H7.4 cm | 322.5 cl
[1]



Oct. baker 22 w/ metallic holder
1POR222e-WHI

28.3 x 16.1 H6.3 cm | 92 cl
[1]



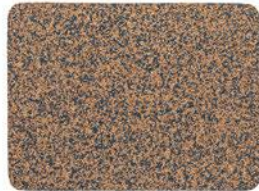
Oct. baker 22
1POR221e-WHI

22 x 16.1 H5.6 cm | 92 cl
[1]



**Cork/recycled EVA
rect. placemat 41**
O30221-WBK

41 x 31 H0.4 cm
[6]



**Cork/recycled EVA
rect. placemat 41**
O30358-IND

41 x 31 H0.4 cm
[6]



**Set 4 cork/recycled EVA
round coaster 10**
O30394-WBK

D10 H0.4 cm
[6]



**Set 4 cork/recycled EVA
round coaster 10**
O30395-IND

D10 H0.4 cm
[6]



**Oak wood cutting/serving
board w/ handle 60**
O30241-OAK

60 x 15 H2.2 cm
[1]



**Oak wood cutting/serving
board w/ handle 50**
O30242-OAK

50 x 15 H2.2 cm
[1]



**Oak wood round cutting/
serving board w/ handle 40**
O30243-OAK

40 x 30 H2.2 cm
[1]

REDONDA



Designed by Torres Euracini, Redonda is a complete tableware collection of shapes and colors made of the best and most resistant stoneware, cylindric stackable pieces suitable for all table settings. The inspiration comes from the modern cosmopolitan culture, translated in pure and minimalist forms, versatility, and refined beauty. A collection that breathes the contemporaneity of the senses.

Fine stoneware, reactive matte glaze. Cork (lid/trivets). Made in Portugal.







**Charger plate/platter 29**

○ RNP291-WHI ● RNP291-GRN
● RNP291-BRN

D29.1 H1.5 cm
[6]

**Dinner plate 27**

○ RNP271-WHI ● RNP271-GRN
● RNP271-BRN

D26.9 H1.5 cm
[6]

**Salad/dessert 21**

○ RNP211-WHI ● RNP211-GRN
● RNP211-BRN

D20.7 H1.5 cm
[6]

**Appetizer plate 17**

○ RNP172-WHI ● RNP172-GRN
● RNP172-BRN

D16.6 H1.5 cm
[6]

**Appetizer plate 13**

○ RNP131-WHI ● RNP131-GRN
● RNP131-BRN

D12.5 H1.5 cm
[6]

**Dip dish 9**

○ RND081-WHI ● RND081-GRN
● RND081-BRN

D8.5 H1.5 cm
[6]

**Centerpiece 29**

○ RNP292-WHI ● RNP292-GRN
● RNP292-BRN

D29.2 H2.7 cm
[6]

**Soup/pasta bowl 25**

○ RNP254-WHI ● RNP254-GRN
● RNP254-BRN

D24.9 H4.5 cm | 135 cl
[6]

**Soup/pasta bowl 21**

○ RNP214-WHI ● RNP214-GRN
● RNP214-BRN

D20.7 H4.5 cm | 86 cl
[6]

**Fruit bowl 13**

○ RNP132-WHI ● RNP132-GRN
● RNP132-BRN

D12.6 H2.6 cm | 15.1 cl
[6]

**Fruit bowl 13**

○ RNS131-WHI ● RNS131-GRN
● RNS131-BRN

D12.6 H7 cm | 58.2 cl
[6]

**Dip dish 8**

○ RND083-WHI ● RND083-GRN
● RND083-BRN

D8.4 H3.5 cm
[6]

**Container/cup 38 cl**

○ RNC112-WHI ● RNC112-GRN
● RNC112-BRN

D8.4 H10.4 cm | 38 cl
[6]

**Mug 38 cl**

○ RNC122-WHI ● RNC122-GRN
● RNC122-BRN

11.5 x 8.4 H10.4 cm | 38 cl
[6]

**Tea cup 24 cl**

○ RNC111-WHI ● RNC111-GRN
● RNC111-BRN

11.2 x 8.5 H6.9 cm | 23.5 cl
[6]

**Tea saucer 17**

○ RNP171-WHI ● RNP171-GRN
● RNP171-BRN

D16.6 H1.5 cm
[6]

**Coffee cup 7 cl**

○ RNC071-WHI ● RNC071-GRN
● RNC071-BRN

7.3 x 5.1 H7 cm | 6.5 cl
[6]

**Coffee saucer 13**

○ RNP133-WHI ● RNP133-GRN
● RNP133-BRN

D12.5 H1.5 cm
[6]

**Creamer 23 cl**

○ RNZ121-WHI ● RNZ121-GRN
● RNZ121-BRN

12.4 x 8.5 H6.9 cm | 23 cl
[1]

**Sugar bowl 21 cl**

○ RNX091-WHI ● RNX091-GRN
● RNX091-BRN

D8.5 H8.3 cm | 21 cl
[1]

**Oval platter 33**

○ RNA331-WHI ● RNA331-GRN
● RNA331-BRN

33.3 x 22.3 H2.8 cm
[1]

**Oval platter 21**

○ RNA211-WHI ● RNA211-GRN
● RNA211-BRN

21.2 x 9.8 H2.7 cm
[1]

**Serving bowl 29**

○ RNS291-WHI ● RNS291-GRN
● RNS291-BRN

D29.1 H6.9 cm | 338.3 cl
[1]

**Serving bowl 21**

○ RNS211-WHI ● RNS211-GRN
● RNS211-BRN

D20.7 H7 cm | 165 cl
[6]

**Pitcher 207 cl**

○ RNZ231-WHI ● RNZ231-GRN
● RNZ231-BRN

18.9 x 12.4 H23 cm | 207 cl
[1]

**Onion canister 21**

○ RND211-WHI ● RND211-GRN
● RND211-BRN

D20.7 H7 cm | 165 cl
[1]

**Garlic canister 13**

○ RND131-WHI ● RND131-GRN
● RND131-BRN

D12.6 H7 cm | 58.2 cl
[1]

**Cork lid/trivet 30**

O30256-NAT

D30 H2.7 cm
[2]

**Cork lid/trivet 22**

O30257-NAT

D21.8 H2.7 cm
[2]

**Cork lid/trivet 14**

O30258-NAT

D13.5 H2.7 cm
[2]

**Cork lid/trivet 9**

O30259-NAT

D9.4 H2.7 cm
[2]

RIVIERA



Designed by the prestigious French floral designer Christian Tortu, this collection is inspired by the French and Italian Riviera. By mixing shapes and colours of its landscape, Tortu created a captivating collection by recreating the sublime features of this region.

Fine stoneware, glossy craquelée glaze with unique finish (interior - VRF, AZU, TER, FRT, VGN and TMT), PVD gold coating (OR), matte glaze (SBN, exterior - VRF, AZU, TER, FRT, VGN and TMT). Made in Portugal.









Dinner plate 27

● NAP275-VRF ● NAP275-AZU
● NAP275-TER

D27.1 H2.8 cm
[6]



Soup/pasta plate 26

● LSP252-VRF ● LSP252-AZU
● LSP252-TER

D25.5 H4.6 cm | 78.5 cl
[6]



Salad/dessert plate 22

● NAP215-VRF ● NAP215-AZU
● NAP215-TER

D21.6 H2.6 cm
[6]



Oval plate 15

● GOP162-VRF ● GOP162-AZU
● GOP162-TER

15.4 x 12 H2.4 cm
[6]



Laurel leaf 18

● VEP182-VRF

17.8 x 5.7 H2.1 cm
[6]



Footed soup/cereal bowl 14

● VES141-VRF ● VES141-AZU
● VES141-TER

D14.1 H8.8 cm | 68.6 cl
[6]



Footed fruit bowl 12

● VES121-VRF ● VES121-AZU
● VES121-TER

D11.6 H7.1 cm | 32.2 cl
[6]



Footed bowl 12

● VED121-VRF ● VED121-AZU
● VED121-TER

D11.9 H11.9 cm | 54.9 cl
[6]



Mug 37 cl

● ATC134-VRF ● ATC134-AZU
● ATC134-TER

13.1 x 9.2 H9.9 cm | 36.5 cl
[6]



Serving bowl 24

● LOS241-VRF ● LOS241-AZU
● LOS241-TER

D24.2 H10.4 cm | 306 cl
[1]



Oval platter 40

● NAA402-VRF ● NAA402-AZU
● NAA402-TER

39.9 x 29 H4 cm
[1]



Strelizia leaf 40
VEA401-FRT

39.8 x 17.2 H3.6 cm
[2]



Charger plate/platter 31
NAP313-FRT

D30.9 H3.2 cm
[6]



Hydrangea leaf 22
VEP221-FRT

21.8 x 19.1 H3.3 cm
[6]



Hydrangea leaf 17
VEP171-FRT

17.2 x 15 H3.2 cm
[6]



Alchemille leaf 18
VEP181-FRT

17.6 x 17 H2.4 cm
[6]



Dip dish leaf 11
VEP111-FRT

11 x 10.3 H2.9 cm
[6]



Oval plate 15
GOP162-FRT

15.4 x 12 H2.4 cm
[6]



Coffee cup and saucer 8 cl
ATCS04-FRT

D12.5 H6.4 cm | 8 cl
[6]



Strelizia leaf 40
VEA401-VGN

39.8 x 17.2 H3.6 cm
[2]



Hydrangea leaf 22
VEP221-VGN

21.8 x 19.1 H3.3 cm
[6]



Hydrangea leaf 17
VEP171-VGN

17.2 x 15 H3.2 cm
[6]



Alchemille leaf 18
VEP181-VGN

17.6 x 17 H2.4 cm
[6]



Laurel leaf 18
VEP182-VGN

17.8 x 5.7 H2.1 cm
[6]



Dip dish leaf 11
VEP111-VGN

11 x 10.3 H2.9 cm
[6]



Hydrangea leaf 22
VEP222-OR

21.8 x 19.1 H3.3 cm
[6]



Alchemille leaf 18
VEP183-OR

17.6 x 17 H2.4 cm
[6]



Strelizia leaf 40
VEA401-TMT

39.8 x 17.2 H3.6 cm
[2]



Charger plate/platter 31
NAP313-TMT

D30.9 H3.2 cm
[6]



Water lily soup/pasta bowl 22
VEP223-TMT

D21.7 H5.4 cm | 91 cl
[6]



Hydrangea leaf 22
VEP221-TMT

21.8 x 19.1 H3.3 cm
[6]



Hydrangea leaf 17
VEP171-TMT

17.2 x 15 H3.2 cm
[6]



Alchemille leaf 18
VEP181-TMT

17.6 x 17 H2.4 cm
[6]



Laurel leaf 18
VEP182-TMT

17.8 x 5.7 H2.1 cm
[6]



Dip dish leaf 11
VEP111-TMT

11 x 10.3 H2.9 cm
[6]



Tea cup and saucer 19 cl
ATCS03-TMT

D16.7 H7.6 cm | 18.5 cl
[6]



Footed server 21
VED221-SBN

D21.1 H22.2 cm | 371.5 cl
[1]



Footed bucket 22
VED241-SBN

22.2 x 21.5 H23.8 cm | 608.4 cl
[1]



Footed centerpiece 22
VES221-SBN

D21.5 H15.3 cm | 320 cl
[1]



Vase/tumbler 10
DCV101-SBN

D8.8 H9.8 cm | 30.9 cl
[4]



Pitcher 165 cl
SLZ281-SBN

D15.2 H27.7 cm | 165 cl
[1]



Pitcher 53 cl
SLZ192-SBN

D8.9 H18.5 cm | 53.2 cl
[1]



Trianon piece 32
DCD321-SBN

D17.5 H32 cm | 86.6 cl
[1]



Trianon piece 25
DCD251-SBN

D13.2 H25.4 cm | 29.9 cl
[1]



Bulb vase 25
VAV251-SBN

D20 H24.6 cm | 446.4 cl
[1]



Diabolo vase 19
DCV191-SBN

18.6 x 7.6 H18.3 cm | 137.7 cl
[1]

RODA



“Bring everyone together at the table... in a circle of friends, we awaken the delight of meeting flavors, experiences and stories of companionship made of emotions and shared memories. Time well spent with moments of pure happiness and culinary delights... the next dish follows; the next story follows.”

It was this simple, yet significant vision that inspired Torres Euracini to create Roda.





A modern and elegant tableware collection with the perfect balance between simple, organic lines and surprising finishes. All pieces were carefully designed to exceed expectations in terms of versatility and use, either in the most casual way or in a special gathering with our “Circle of Friends”.



Completely modern and versatile, this signature collection elevates any table setting, due to its unique glazes and shapes. The speckled finishes featuring both glazes turn each piece unique.

Fine stoneware, glossy glaze (BRA), matte glaze (ARD). Made in Portugal.



Dinner plate 28

○ RTP281-BRA
● RTP281-ARD

D27.7 H2 cm
[6]



Salad/dessert plate 22

○ RTP221-BRA
● RTP221-ARD

D21.9 H2.1 cm
[6]



Appetizer plate 16

○ RTP161-BRA
● RTP161-ARD

D15.6 H1.8 cm
[6]



Soup/pasta plate 21

○ RTP223-BRA
● RTP223-ARD

D21.4 H4.3 cm | 32.6 cl
[6]



Soup/pasta bowl 22

○ RTP225-BRA
● RTP225-ARD

D21.5 H5 cm | 96.1 cl
[6]



Soup/cereal bowl 16

○ RTS162-BRA

D15.9 H4.8 cm | 39 cl
[6]



Soup/cereal bowl 16

○ RTS161-BRA
● RTS161-ARD

D15.6 H8 cm | 82.4 cl
[6]



Square bowl 9

○ RTN091-BRA
● RTN091-ARD

9 x 8.5 H4.9 cm | 15 cl
[6]



Container/cup 33 cl

○ RTC101-BRA

D8.9 H10.2 cm | 33 cl
[6]



Mug 33 cl

○ RTC121-BRA

D11.5 H10.2 cm | 33 cl
[6]



Tea cup 20 cl

○ RTC111-BRA
● RTC111-ARD

10.6 x 8.5 H6.8 cm | 19.5 cl
[6]



Tea saucer 16

○ RTP162-BRA
● RTP162-ARD

D15.5 H1.7 cm
[6]



Container/cup 8 cl

○ RTC061-BRA

D5.9 H6.1 cm | 7.8 cl
[6]



Espresso cup 8 cl

○ RTC081-BRA

D7.7 H6.1 cm | 7.8 cl
[6]



Espresso saucer 11

○ RTP111-BRA

D10.8 H1.5 cm
[6]



Oval platter 40

○ RTA401-BRA

40 x 30.6 H4.4 cm
[1]



Oval plate/platter 28

○ RTA281-BRA
● RTA281-ARD

27.5 x 18.8 H1.5 cm
[1]



Oval plate/platter 22

○ RTA221-BRA
● RTA221-ARD

21.9 x 12.7 H1.6 cm
[6]



Serving bowl 25

○ RTS251-BRA

D24.9 H11 cm | 302 cl
[1]



Serving bowl 19

○ RTS191-BRA
● RTS191-ARD

D18.6 H9 cm | 138.9 cl
[6]



Egg cup 13

○ RTD131-BRA
● RTD131-ARD

D12.5 H4 cm
[6]



Deep rect. tray 27

○ RTR271-BRA

26.9 x 9.1 H4.7 cm | 55.9 cl
[6]



Deep rect. tray 18

○ RTR182-BRA
● RTR182-ARD

17.6 x 8.6 H4.9 cm | 34.5 cl
[6]



Rect. plate/platter 28

○ RTR281-BRA

28.2 x 15.9 H1.5 cm
[6]



Rect. tray 19

○ RTR191-BRA
● RTR191-ARD

18.5 x 9.6 H1.7 cm
[6]



Mini square plate 9

○ RTQ091-BRA
● RTQ091-ARD

9 x 9.3 H1.5 cm
[6]

ROSA



Inspired by the Romantic period, the Rosa Collection flows with the reflection of love. The feminine cutouts and silhouettes create a sense of contemporary casual elegance, achieved by a manual process; the hand-painted rim and edges bring these classic elements to be reinterpreted through the eyes of the present. Pure and simple preserved memories leave us enchanted at every gathering.

Fine stoneware, glossy glaze. Made in Portugal.





Dinner plate 28
DAP281-WHI

D28.2 H3.1 cm
[6]



Soup/pasta plate 25
DAP251-WHI

D24.7 H4.8 cm | 79.5 cl
[6]



Salad/dessert plate 22
DAP221-WHI

D22.4 H2.5 cm
[6]



Soup/cereal bowl 16
DAS161-WHI

D16 H8 cm | 66 cl
[6]



Mug 40 cl
DAC141-WHI

14.3 x 11 H11.3 cm | 40 cl
[6]



Oval platter 40
DAA401-WHI

40 x 28.8 H4.2 cm
[1]



Serving bowl 30
DAS301-WHI

D30 H9.1 cm | 313 cl
[1]

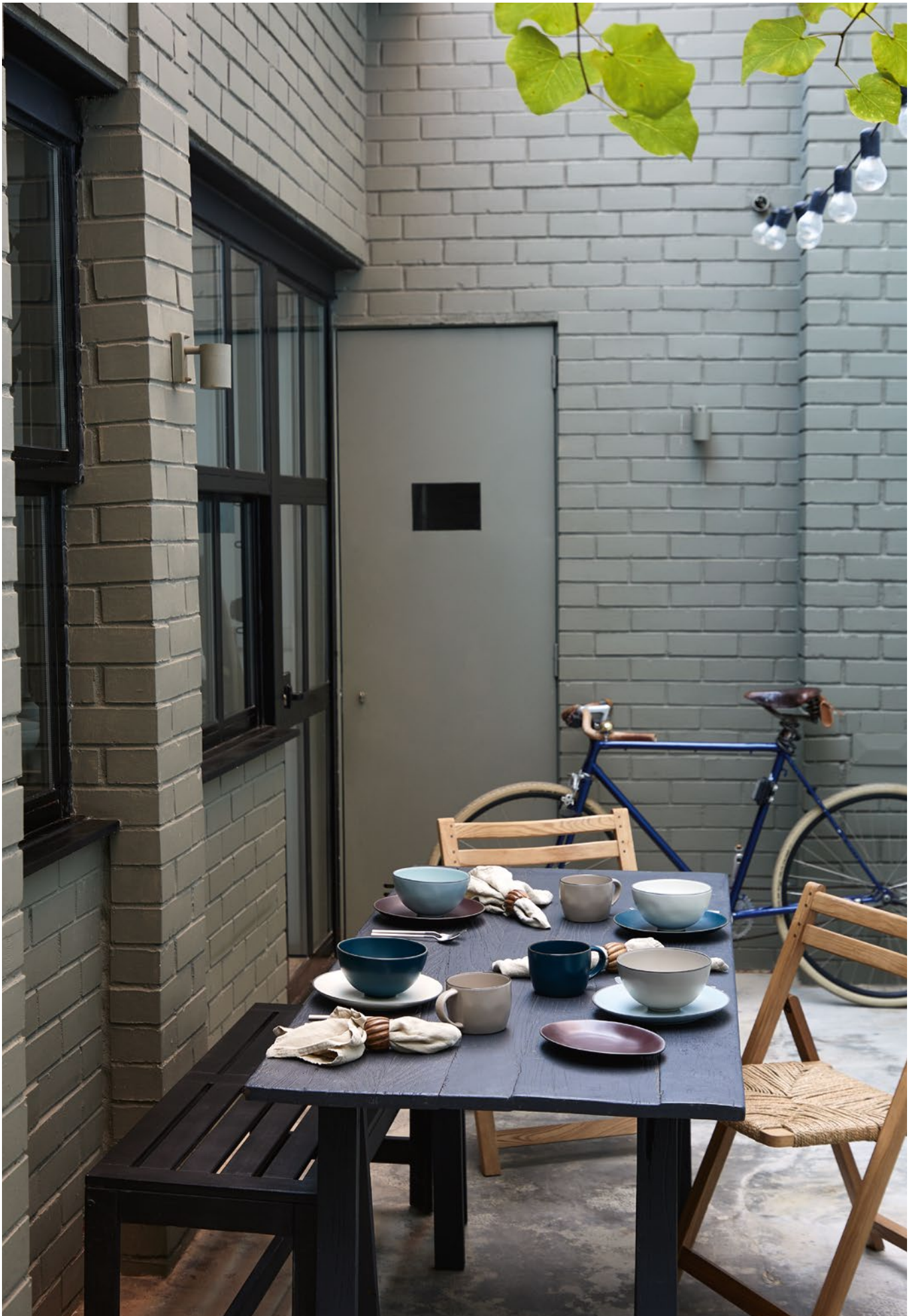


STACKED ORGANIC



Stacked Organic is a poetry of form and function. This dinnerware collection is made of Ecogres — Costa Nova’s recycled clay, honoring the earth and its bounty. Its organic shapes evoke the curves and contours of nature.

Available in an exquisite array of five contemporary colors, the collection offers a comprehensive ensemble of both dinnerware and serveware. Each piece boasts a meticulously hand finished exposed clay rim, artfully embraced by velvety matte glazes.







With Stacked Organic, the table becomes a canvas of conscious choices, where every piece whispers of its recycled origins and every curve bears the touch of a master artisan.



Recycled stoneware, matte glaze. Made in Portugal.



Dinner plate 27

○ 1COP271E-SLT

D26.7 H2.9 cm
[6]



Salad/dessert plate 22

○ 1COP211E-SLT

D21.6 H2.8 cm
[6]



Oval plate 20

○ 1GOP201E-SLT

20.3 x 15.8 H2.5 cm
[6]



Pasta bowl 23

○ 1GOP231E-SLT

23.3 x 22.7 H5.7 cm | 92.3 cl
[6]



Soup/cereal bowl 15

○ 1IOS153E-SLT

D15.2 H8 cm | 65 cl
[6]



Mug 36 cl

○ 1GOC131-SLT

14 x 10.3 H7.6 cm | 36.3 cl
[6]



Oval platter 45

○ 1GOA451E-SLT

45 x 31.1 H4.1 cm
[1]



Serving bowl 37

○ 1GOS371E-SLT

D36.6 H6.7 cm | 333 cl
[1]



Footed plate 27

○ 1LOP275E-SLT

D27.2 H12 cm
[1]



Oval baker 30

○ 1LSA301E-SLT

30.4 x 22.3 H7.5 cm | 240 cl
[1]



Oval baker 26

○ 1LSA251E-SLT

25.6 x 18.3 H6.8 cm | 143.5 cl
[1]



Pie dish 27

○ 1ET271E-SLT

D26.7 H5.5 cm | 124 cl
[1]



Bird 9

○ 1LSD091-SLT

6.8 x 3.5 H9.3 cm
[6]



Dinner plate 27

● 1COP271E-CRM

D26.7 H2.9 cm
[6]



Salad/dessert plate 22

● 1COP211E-CRM

D21.6 H2.8 cm
[6]



Oval plate 20

● 1GOP201E-CRM

20.3 x 15.8 H2.5 cm
[6]



Pasta bowl 23

● 1GOP231E-CRM

23.3 x 22.7 H5.7 cm | 92.3 cl
[6]



Soup/cereal bowl 15

● 1IOS153-CRM

D15.2 H8 cm | 65 cl
[6]



Mug 36 cl

● 1GOC131-CRM

14 x 10.3 H7.6 cm | 36.3 cl
[6]



Oval platter 45

● 1GOA451E-CRM

45 x 31.1 H4.1 cm
[1]



Serving bowl 37

● 1GOS371E-CRM

D36.6 H6.7 cm | 333 cl
[1]



Footed plate 27

● 1LOP275E-CRM

D27.2 H12 cm
[1]



Pie dish 27

● 1ET271E-CRM

D26.7 H5.5 cm | 124 cl
[1]



Bird 9

● 1LSD091-CRM

6.8 x 3.5 H9.3 cm
[6]

COSTA NOVA — STONEWARE — STACKED ORGANIC

Available in Salt, Cremini, Port, Deep Sea and Sky



Dinner plate 27

● 1COP271E-PRT

D26.7 H2.9 cm
[6]



Salad/dessert plate 22

● 1COP211E-PRT

D21.6 H2.8 cm
[6]



Oval plate 20

● 1GOP201E-PRT

20.3 x 15.8 H2.5 cm
[6]



Pasta bowl 23

● 1GOP231E-PRT

23.3 x 22.7 H5.7 cm | 92.3 cl
[6]



Soup/cereal bowl 15

● 1IOS153-PRT

D15.2 H8 cm | 65 cl
[6]



Mug 36 cl

● 1GOC131-PRT

14 x 10.3 H7.6 cm | 36.3 cl
[6]



Oval platter 45

● 1GOA451E-PRT

45 x 31.1 H4.1 cm
[1]



Serving bowl 37

● 1GOS371E-PRT

D36.6 H6.7 cm | 333 cl
[1]



Footed plate 27

● 1LOP275E-PRT

D27.2 H12 cm
[1]



Pie dish 27

● 1ET271E-PRT

D26.7 H5.5 cm | 124 cl
[1]



Bird 9

● 1LSD091-PRT

6.8 x 3.5 H9.3 cm
[6]

COSTA NOVA — STONEWARE — STACKED ORGANIC

Available in Salt, Cremini, Port, Deep Sea and Sky



Dinner plate 27

● 1COP271E-SEA

D26.7 H2.9 cm
[6]



Salad/dessert plate 22

● 1COP211E-SEA

D21.6 H2.8 cm
[6]



Oval plate 20

● 1GOP201E-SEA

20.3 x 15.8 H2.5 cm
[6]



Pasta bowl 23

● 1GOP231E-SEA

23.3 x 22.7 H5.7 cm | 92.3 cl
[6]



Soup/cereal bowl 15

● 1IOS153-SEA

D15.2 H8 cm | 65 cl
[6]



Mug 36 cl

● 1GOC131-SEA

14 x 10.3 H7.6 cm | 36.3 cl
[6]



Oval platter 45

● 1GOA451E-SEA

45 x 31.1 H4.1 cm
[1]



Serving bowl 37

● 1GOS371E-SEA

D36.6 H6.7 cm | 333 cl
[1]



Pie dish 27

● 1ET271E-SEA

D26.7 H5.5 cm | 124 cl
[1]



Bird 9

● 1LSD091-SEA

6.8 x 3.5 H9.3 cm
[6]

COSTA NOVA — STONEWARE — STACKED ORGANIC

Available in Salt, Cremini, Port, Deep Sea and Sky



Dinner plate 27

● 1COP271E-SKY

D26.7 H2.9 cm
[6]



Salad/dessert plate 22

● 1COP211E-SKY

D21.6 H2.8 cm
[6]



Oval plate 20

● 1GOP201E-SKY

20.3 x 15.8 H2.5 cm
[6]



Pasta bowl 23

● 1GOP231E-SKY

23.3 x 22.7 H5.7 cm | 92.3 cl
[6]



Soup/cereal bowl 15

● 1IOS153-SKY

D15.2 H8 cm | 65 cl
[6]



Mug 36 cl

● 1GOC131-SKY

14 x 10.3 H7.6 cm | 36.3 cl
[6]



Oval platter 45

● 1GOA451E-SKY

45 x 31.1 H4.1 cm
[1]



Serving bowl 37

● 1GOS371E-SKY

D36.6 H6.7 cm | 333 cl
[1]



Footed plate 27

● 1LOP275E-SKY

D27.2 H12 cm
[1]



Pie dish 27

● 1ET271E-SKY

D26.7 H5.5 cm | 124 cl
[1]



Bird 9

● 1LSD091-SKY

6.8 x 3.5 H9.3 cm
[6]

Stacked Organic color chart ○ Salt — White ● Cremini — Beige ● Port — Bordeaux ● Deep Sea — Blue ● Sky — Light blue



FLATWARE

210 ANTIGO

212 CHEESE & STEAK KNIVES

214 LUMI

216 MITO

218 NAU

220 PICO

222 PRADO

224 SAGA



Flatware collections

High-quality stainless steel, made in Portugal

Above, left to right: Mito flatware, Luzia dinner plate and Gomos glass. Lumi flatware, Livia salad and dinner plate. Saga flatware, in combination with Augusta dinnerware. Prado flatware, Rosa salad and dinner plate and Liso glass.



Made in Portugal from high-quality stainless steel (18/10), our flatware collections are crafted for exceptional durability. A sustainable choice for constant everyday use. The collections feature timeless designs with a contemporary touch. Each piece is precision-crafted for exceptional durability

and weight for the perfect balance. Flatware also includes PVD coatings, allowing a perfect combination with different settings and styles.

ANTIGO



Antigo enhances any table setting with its simple design and versatility. With rounded edges and a sleek polished look, this collection is the perfect accompaniment to a well-dressed table.

Stainless steel 18/10, 3 mm, brushed finish, hollow handle knife. Available in brushed. Made in Portugal.



Flatware 5 pieces
C20266-BRS

1 Table fork, knife and spoon,
1 dessert fork and spoon
[1]



Flatware 20 pieces
C20264-BRS

4 Table forks, knives and spoons,
4 dessert forks and spoons
[1]



Flatware 24 pieces
C20142-BRS

6 Table forks, knives and spoons,
6 tea spoons
[1]



Fish set (12p.)
C20421-BRS

6 Fish forks and knives
[1]



Dessert set (18p.)
C20422-BRS

6 Dessert forks, knives
and spoons
[1]



Coffee set (6p.)
C20423-BRS

6 Coffee spoons
[1]



Salad serving set (2p.)
C20223-BRS

1 Salad fork and spoon
[1]



Hostess serving set (5p.)
C20424-BRS

1 Cake server,
1 serving spoon, 1 salad fork
and spoon, 1 sauce spoon
[1]

CHEESE & STEAK



The cheese and steak knives are convincing both functionality and visually: the rosewood handle is reminiscent of the classic rustic look, while the slightly curved shape of the knife gives it a touch of elegance.

Above: Cheese knives in detail.



Rosewood steak knife



Maple steak knife



Set 3 cheese knives
C20663-BRS

1 Pronged cheese knife,
1 Parmesan cheese knife,
1 Gorgonzola cheese knife

[1]



Set 4 Rosewood steak knives
C20587-VTG

4 Steak knives

[1]



Set 4 Maple steak knives
C20705-POL

4 Steak knives

[1]

Cheese knives: Stainless steel 18/10, brushed finish, stamped knife, rosewood handle, brass rivets. Made in Portugal. **Rosewood steak knives:** Stainless steel, vintage finish, stamped knife, serrated edge, rosewood handle, brass rivets. Made in Portugal. **Maple steak knives:** Stainless steel, polished finish, stamped knife, serrated edge, hard maple handle. Made in Portugal.

LUMI



Sophisticated yet simple, this collection will bring an element of contemporary charm to any dining table. Perfect for everyday use as well as more formal dining celebration, this stylish collection is a distinctive expression of value and practicality.

Stainless steel 18/10, 4 mm, polished finish, hollow handle knife. Available in polished. Made in Portugal.



Flatware 5 pieces
C20413-POL

1 Table fork, knife and spoon,
1 dessert fork and spoon
[1]



Flatware 20 pieces
C20311-POL

4 Table forks, knives and spoons,
4 dessert forks and spoons
[1]



Flatware 24 pieces
C20307-POL

6 Table forks, knives and spoons,
6 tea spoons
[1]



Fish set (12p.)
C20432-POL

6 Fish forks and knives
[1]



Dessert set (18p.)
C20433-POL

6 Dessert forks, knives and spoons
[1]



Coffee set (6p.)
C20434-POL

6 Coffee spoons
[1]



Salad serving set (2p.)
C20324-POL

1 Salad fork and spoon
[1]



Hostess serving set (4p.)
C20435-POL

1 Serving spoon, 1 cake server,
1 salad fork and spoon
[1]

MITO



Modern and stylish, Mito was designed to upgrade any table setting. With its brushed resin cable in three different colors and a perfect balance with the steel, this collection appears original and contemporary.

Stainless steel 18/10, 6 mm, brushed finish, resin handle. Available in cru, black and wood. Made in Portugal.



Mito Black (BLK)



Mito Cru (CRM)



Flatware 5 pieces

● C20668-CRM ● C20420-BLK
● C20454-WDN

1 Table fork, knife and spoon,
1 dessert fork and spoon
[1]



Flatware 20 pieces

● C20669-CRM ● C20317-BLK
● C20455-WDN

4 Table forks, knives and spoons,
4 dessert forks and spoons
[1]



Flatware 24 pieces

● C20670-CRM ● C20318-BLK
● C20456-WDN

6 Table forks, knives and spoons,
6 tea spoons
[1]



Fish set (12p.)

● C20672-CRM ● C20439-BLK
● C20458-WDN

6 Fish forks and knives
[1]



Dessert set (18p.)

● C20673-CRM ● C20440-BLK
● C20459-WDN

6 Dessert forks, knives
and spoons
[1]



Chopstick set (2p.)

● C20671-CRM ● C20320-BLK
● C20472-WDN

2 Chopsticks
[1]



Coffee set (6p.)

● C20674-CRM ● C20441-BLK
● C20460-WDN

6 Coffee spoons
[1]



Salad serving set (2p.)

● C20675-CRM ● C20558-BLK
● C20559-WDN

1 Salad fork and spoon
[1]

NAU



Striking, solid and full of character, Nau expresses itself through powerful shapes in four contemporary finishes. A unique, authentic and refined collection.

Stainless steel 18/10, 3.5 mm, brushed finish (BRS), polished finish (POL), PVD coating (GLD and COP), solid handle.
Available in brushed, gold, copper and polished. Made in Portugal.



Flatware 5 pieces

● C20417-BRS ● C20418-GLD
● C20419-COP ● C20706-POL

1 Table fork, knife and spoon,
1 dessert fork and spoon
[1]



Flatware 20 pieces

● C20314-BRS ● C20402-GLD
● C20404-COP ● C20707-POL

4 Table forks, knives and spoons,
4 dessert forks and spoons
[1]



Flatware 24 pieces

● C20315-BRS ● C20403-GLD
● C20405-COP ● C20708-POL

6 Table forks, knives and spoons,
6 tea spoons
[1]



Fish set (12p.)

● C20442-BRS
● C20709-POL

6 Fish forks and knives
[1]



Dessert set (18p.)

● C20443-BRS ● C20446-GLD
● C20447-COP ● C20710-POL

6 Dessert forks, knives
and spoons
[1]



Coffee set (6p.)

● C20444-BRS
● C20711-POL

6 Coffee spoons
[1]



Salad serving set (2p.)

● C20280-BRS
● C20712-POL

1 Salad fork and spoon
[1]



Hostess serving set (4p.)

● C20445-BRS
● C20713-POL

1 Serving spoon, 1 cake server,
1 salad fork and spoon
[1]

PICO



Pico flatware boasts a modern design featuring a sleek black resin handle, making it the perfect choice for those who appreciate simplicity with a touch of elegance. Whether you're hosting a formal dinner or a casual gathering, Pico complements any occasion, adding a refined and contemporary feel to your dining experience.

Stainless steel 18/10, 8 mm, brushed finish, resin handle. Available in black. Made in Portugal.



Flatware 5 pieces
C20744-BLK

1 Table fork, knife and spoon,
1 dessert fork and spoon
[1]



Flatware 20 pieces
C20743-BLK

4 Table forks, knives and spoons,
4 dessert forks and spoons
[1]



Flatware 24 pieces
C20742-BLK

6 Table forks, knives and spoons,
6 tea spoons
[1]



Salad serving set (2p.)
C20747-BLK

1 Salad fork and spoon
[1]

PRADO



Enhance your dining experience with this beautiful vintage inspired Portuguese collection. With a solid handle and a PVD vintage finish, Prado features a solid ergonomic design to hug the curve of your hand. Prado is perfect to use on formal, festive, and casual occasions.

Stainless steel 18/10, 3 mm, PVD vintage finish, solid handle. Available in vintage brushed and vintage gold. Made in Portugal.



Flatware 5 pieces

● C20646-VTB ● C20661-VTG

1 Table fork, knife and spoon,
1 dessert fork, spoon

[1]



Flatware 20 pieces

● C20647-VTB ● C20662-VTG

4 Table forks, knives and spoons,
4 dessert forks and spoons

[1]



Flatware 24 pieces

● C20642-VTB ● C20644-VTG

6 Table forks, knives and spoons,
6 tea spoons

[1]



Fish set (12p.)

● C20649-VTB

6 Fish forks and knives

[1]



Dessert set (18p.)

● C20643-VTB ● C20645-VTG

6 Dessert forks, knives and spoons

[1]



Coffee set (6p.)

● C20651-VTB

6 Coffee spoons

[1]



Salad serving set (2p.)

● C20652-VTB

1 Salad fork and spoon

[1]



Hostess serving set (4p.)

● C20653-VTB

1 Cake server, 1 serving spoon,
1 salad fork, 1 salad spoon

[1]

SAGA



Classic shapes and contemporary matte finish in anthracite and black, Saga is a new take on the traditional. With expressive lines, this collection makes every meal feel like an occasion.

Stainless steel 18/10, 2.5 mm, vintage finish, PVD coating (black), solid handle. Available in matte and black matte. Made in Portugal.



Flatware 5 pieces

● C20267-MAT ● C20411-BLK

1 Table fork, knife and spoon,
1 dessert fork and spoon

[1]



Flatware 20 pieces

● C20265-MAT ● C20406-BLK

4 Table forks, knives and spoons,
4 dessert forks and spoons

[1]



Flatware 24 pieces

● C20242-MAT ● C20407-BLK

6 Table forks, knives and spoons,
6 tea spoons

[1]



Fish set (12p.)

● C20448-MAT

6 Fish forks and knives

[1]



Dessert set (18p.)

● C20449-MAT ● C20452-BLK

6 Dessert forks, knives
and spoons

[1]



Coffee set (6p.)

● C20450-MAT

6 Coffee spoons

[1]



Salad serving set (2p.)

● C20237-MAT

1 Salad fork and spoon

[1]



Hostess serving set (4p.)

● C20451-MAT

1 Serving spoon, 1 sauce server,
1 salad fork and spoon

[1]

GLASSWARE

230 RECYCLED GLASSWARE

231 GOMO

231 LISO

231 TOSCA

232 MOUTH-BLOWN HANDMADE GLASSWARE

233 AROMA

233 ESPIRAL

234 MAR

234 VITE

234 BAGA & TINTA DECANTERS

234 COUPOLE DOMES

236 MACHINE-MADE GLASSWARE

237 ALICE

237 GOMOS

238 NOVA

238 SAFRA

238 VINE



Glassware collections

Uniqueness and high-quality craftsmanship

Above, left to right: Baga e Tinta collections. Nova collection.
Gomo collection with Livia pitcher. Espiral collection.



Most of our glassware collections are crafted either in Portugal or across Europe, regions renowned for their distinctive and high-quality glass craftsmanship. Our collections feature a diverse range of production techniques, from the mesmerizing art of mouth-blown glass - a captivating, handmade process that



guarantees the uniqueness of each glass – to precision machine-made glass.

Designed for everyday use and effortless maintenance, Costa Nova glassware collections offer a relaxed elegance that brings adds a modern charm to any gathering or event.

RECYCLED GLASSWARE



Crafted from recycled glass, Gomo, Liso and Tosca not only epitomize our commitment to sustainability but also offer a heartfelt nod to eco-conscious living. By repurposing and giving new life to glass materials, we contribute to the reduction of waste and the conservation of valuable resources.

Recycled glass. Pressed glass. Rolled rim. Made in Egypt.

GOMO



Tumbler 48 cl
V10251-GRN

D9.3 H13 cm | 48 cl
[6]



Wine glass 38 cl
V10252-GRN

D9.4 H16.4 cm | 38 cl
[6]

LISO



Tumbler 48 cl
V10249-GRN

D9.3 H12.5 cm | 48 cl
[6]



Wine glass 38 cl
V10250-GRN

D9.4 H16.2 cm | 38 cl
[6]

TOSCA



Bottle 150 cl
V10253-GRN

D10 H28 cm | 150 cl
[1]



Bottle 70 cl
V10254-GRN

D8.5 H20 cm | 70 cl
[1]



Pitcher 150 cl
V10255-GRN

D12 H24 cm | 150 cl
[1]

MOUTH-BLOWN HANDMADE GLASS



Our glass manufacturers use 2000 years old techniques to make glass by hand.
Handmade glass is made by mouth blowing molten glass.

Aroma and Espiral: Lead and cadmium free crystalline glass. Mouth-blown glass. Cut rim. Made in Poland.



Aroma water glass



Mar water and wine glass

AROMA



Water glass 45 cl
V10232-CLR

D8.3 H15.5 cm | 45 cl
[6]



Wine glass 33 cl
V10233-CLR

D8.1 H13.9 cm | 33 cl
[6]



Flute 20 cl
V10234-CLR

D7.4 H19 cm | 20 cl
[6]

ESPIRAL



Tumbler 50 cl
V10235-CLR

D10 H12.5 cm | 50 cl
[6]



Water glass 40 cl
V10236-CLR

D10 H15 cm | 40 cl
[6]



Wine glass 30 cl
V10237-CLR

D9.3 H14 cm | 30 cl
[6]



Flute 20 cl
V10238-CLR

D6.4 H18 cm | 20 cl
[6]

MAR



Water glass 21 cl
V10239-CLR

D9 H16.5 cm | 21 cl
[6]



Wine glass 18 cl
V10240-CLR

D9 H15.5 cm | 18 cl
[6]



Flute 11 cl
V10241-CLR

D7 H18.8 cm | 11 cl
[6]

VITE



Bordeaux glass 56 cl
V10244-CLR

D6.2 H23.3 cm | 56 cl
[6]



Burgundy glass 85 cl
V10245-CLR

D8.5 H20.7 cm | 85 cl
[6]



Chardonay White glass 55 cl
V10246-CLR

D6.9 H19.4 cm | 55 cl
[6]

BAGA & TINTA DECANTERS



Decanter 180 cl
V10247-CLR

D23.5 H26 cm | 180 cl
[1]



Decanter 160 cl
V10248-CLR

D16 H27 cm | 160 cl
[1]

COUPOLE GLASS DOMES



Glass dome 30
V10242-CLR

D30.1 H22.8 cm (handle H6 cm)
[1]



Glass dome 25
V10243-CLR

D24.8 H19.4 cm (handle H5.5 cm)
[1]



Vite glasses



Coupole glass domes



Baga & Tinta decanters

Artistically designed to coordinate beautifully with any table, our Vite, Baga & Tinta and Coupole collections set the mood for the wine and cheese enjoyment.

Inspired by the uniting joy of socializing, its contemporary shapes will enhance any gathering and elevate any wine, cheese or charcuterie.

Vite glassware and decanters: Lead and cadmium free crystalline glass. Mouth-blown glass. Cut rim. Made in Poland. **Glass domes:** Lead and cadmium free crystalline glass. Mouth-blown glass. Cut rim. Large solid handle. Made in Poland.

MACHINE-MADE GLASSWARE



Our European-crafted glassware collections in this chapter showcase a thoughtfully curated range, marrying contemporary and classic design elements. Produced with automated precision, these collections are meticulously crafted from lead and cadmium-free glass, ensuring both safety and timeless elegance.

Alice: Sodalime glass. Machine made. Cut rim. Made in Germany. **Gomos:** Sodalime glass. Machine-blown glass. Rolled rim. Made in France.



Alice glassware



Gomos water glass

ALICE



Red wine glass 48 cl
V10310-CLR

D7 H21 cm | 47.5 cl
[6]



White wine glass 38 cl
V10311-CLR

D6 H20 cm | 38 cl
[6]



Flute 26 cl
V10312-CLR

D5 H23 cm | 26 cl
[6]

GOMOS



Water glass 28 cl
V10218-CLR

D9 H13.5 cm | 28 cl
[6]



Wine glass 23 cl
V10219-CLR

D8.6 H12.6 cm | 23 cl
[6]

NOVA



Tumbler 50 cl
V10179-CLR

D9 H12 cm | 50 cl
[6]



Tumbler 37 cl
V10184-CLR

D9 H9 cm | 37 cl
[6]



Tumbler 22 cl
V10183-CLR

D8 H6 cm | 22 cl
[6]

SAFRA



Water glass 35 cl
V10226-CLR

D8 H14 cm | 34.5 cl
[6]



Wine glass 28 cl
V10227-CLR

D7 H13 cm | 28 cl
[6]

VINE



Tumbler 33 cl
V10231-CLR

D7 H10 cm | 33 cl
[6]



Red wine glass 48 cl
V10228-CLR

D7 H21 cm | 47.8 cl
[6]



White wine glass 38 cl
V10229-CLR

D6 H20 cm | 37.8 cl
[6]



Flute 26 cl
V10230-CLR

D5 H23 cm | 26.2 cl
[6]



Vine tumbler and red wine glass



Safra glassware



Nova glassware

Nova: Sodalime glass. Pressed glass. Cut rim. Made in Portugal.
Safra: Tempered glass. Pressed glass. Rolled rim. Stackable. Made in Italy. **Vine:** Lead and cadmium free crystalline glass. Pressed glass. Cut rim. Made in Italy.

TABLE LINENS

244 BELLA

244 CARMO

246 CASCATA

246 DENIM

248 LUISA

250 MARIA



Table Linens Collections

Delicately curated, our table linens are designed to infuse both style and distinctive charm into your dining space



Our table linens are made in Portugal from the best natural fibers and according to sustainable methods. Available in different colors and models they create the right feeling for each occasion, as they are elegant, sophisticated, and match perfectly with any tableware.

Natural fibers. Made in Portugal.

BELLA & CARMO



Bella, a collection of napkins meticulously crafted from 100% linen, showcases an embroidered hem in three essential colors. Meanwhile, Carmo, fashioned from 100% cotton and treated with a yarn dye, features an elegant herringbone weave in black, chocolate brown, and blue denim. Both collections proudly hail from Portugal, a nation celebrated worldwide for its illustrious heritage in the textile industry.

Bella: Embroidered hem. 100% linen. Made in Portugal. Available in black, crimson and tofu. **Carmo:** Yarn dye. Herringbone weave. 100% cotton. Made in Portugal. Available in black, chocolate and denim.

BELLA

Embroidered hem. 100% linen.



BLACK

Napkin 100% LI overlock

TX0263-BLK

50 x 50 cm

[2]



CRIMSON

Napkin 100% LI overlock

TX0264-CRN

50 x 50 cm

[2]



TOFU

Napkin 100% LI overlock

TX0265-TFU

50 x 50 cm

[2]

CARMO

Yarn dye. Herringbone weave. 100% cotton.



BLACK

Napkin 100% CO

TX0189-BLK

50 x 50 cm

[2]



CHOCOLATE

Napkin 100% CO

TX0190-CHO

50 x 50 cm

[2]



DENIM

Napkin 100% CO

TX0188-DEN

50 x 50 cm

[2]

CASCATA & DENIM



In this section, we present two distinct options. First, there's Cascata, a collection consisting of napkins, placemats, and runners, available in three stylish colors. These pieces are thoughtfully crafted from a blend of 40% linen and 60% cotton. Next, we have Denim, a carefully curated collection that includes two distinct items: a denim placemat and a stylish apron, crafted from 100% cotton.

Cascata: Fabric dye. 40% linen, 60% cotton. Made in Portugal. Available in fog, dusk and sky.

Denim: Indigo dye. Twill weave. 100% cotton. Made in Portugal.

CASCATA

Fabric dye. 40% linen, 60% cotton.



**FOG
Napkin**
TX0148-FOG

47 x 47 cm
[2]



**DUSK
Napkin**
TX0151-DSK

47 x 47 cm
[2]



**SKY
Napkin**
TX0154-SKY

47 x 47 cm
[2]

Placemat
TX0147-FOG

37 x 47 cm
[2]

Placemat
TX0150-DSK

37 x 47 cm
[2]

Placemat
TX0153-SKY

37 x 47 cm
[2]

Runner
TX0149-FOG

45 x 170 cm
[2]

Runner
TX0152-DSK

45 x 170 cm
[2]

Runner
TX0155-SKY

45 x 170 cm
[2]

DENIM

Indigo dye. Twill weave. 100% cotton.



Denim apron
TX0261-IND

98 x 75 cm
[1]



Denim placemat
TX0262-IND

35 x 45 cm
[2]

LUISA



Luisa boasts five casually sophisticated colors that perfectly complement our stoneware collections on the table. Crafted from 100% linen, this collection showcases a stunning openwork hem and matures in appearance with time and use.

Garment dye. Openwork 1cm hem. 100% linen. Made in Portugal. Available in forged iron, cloud grey, chalk white, tofu and dark denim.



FORGED IRON
Napkin 100% LI ajour
TX0176-IRN
50 x 50 cm
[2]



CLOUD GREY
Napkin 100% LI ajour
TX0174-GRY
50 x 50 cm
[2]



CHALK WHITE
Napkin 100% LI ajour
TX0173-WHI
50 x 50 cm
[2]



TOFU
Napkin 100% LI ajour
TX0175-TFU
50 x 50 cm
[2]



DARK DENIM
Napkin 100% LI ajour
TX0177-DEN
50 x 50 cm
[2]

MARIA



Maria, a table linens collection crafted from 100% linen, is the perfect choice for everyone. With its diverse range of colors, eco-conscious approach (reducing paper napkin waste), and adaptability to various table decors, it offers an ideal solution for all.

Garment dye. 100% linen. Made in Portugal. Available in chalk white, cloud grey, dusk grey, blush, khaki, olive, ceylon yellow, amber, chilli pepper and mint.



CHALK WHITE
Napkin 100% LI
TX0178-WHI

47 x 47 cm
[2]



MINT
Napkin 100% LI
TX0183-MNT

47 x 47 cm
[2]



DUSK GREY
Napkin 100% LI
TX0180-DGY

47 x 47 cm
[2]



BLUSH
Napkin 100% LI
TX0181-BLS

47 x 47 cm
[2]

Placemat 100% LI
TX0188-WHI

37 x 47 cm
[2]

Placemat 100% LI
TX0193-MNT

37 x 47 cm
[2]

Placemat 100% LI
TX0190-DGY

37 x 47 cm
[2]

Placemat 100% LI
TX0191-BLS

37 x 47 cm
[2]

Runner 100% LI
TX0198-WHI

45 x 170 cm
[2]

Runner 100% LI
TX0203-MNT

45 x 170 cm
[2]

Runner 100% LI
TX0200-DGY

45 x 170 cm
[2]

Runner 100% LI
TX0201-BLS

45 x 170 cm
[2]

Table Cloth 100% LI
TX0258-WHI

175 x 250 cm
[1]

Table Cloth 100% LI
TX0260-MNT

175 x 250 cm
[1]

Table Cloth 100% LI
TX0259-DGY

175 x 250 cm
[1]



CLOUD GREY
Napkin 100% LI
TX0179-CGY

47 x 47 cm
[2]

Placemat 100% LI
TX0189-CGY

37 x 47 cm
[2]

Runner 100% LI
TX0199-CGY

45 x 170 cm
[2]





KHAKI
Napkin 100% LI
TX0182-KAK

47 x 47 cm
[2]

Placemat 100% LI
TX0192-KAK

37 x 47 cm
[2]

Runner 100% LI
TX0202-KAK

45 x 170 cm
[2]



OLIVE
Napkin 100% LI
TX0184-OLI

47 x 47 cm
[2]

Placemat 100% LI
TX0194-OLI

37 x 47 cm
[2]

Runner 100% LI
TX0204-OLI

45 x 170 cm
[2]



CEYLON YELLOW
Napkin 100% LI
TX0185-YEL

47 x 47 cm
[2]

Placemat 100% LI
TX0195-YEL

37 x 47 cm
[2]

Runner 100% LI
TX0205-YEL

45 x 170 cm
[2]



AMBER
Napkin 100% LI
TX0186-AMB

47 x 47 cm
[2]

Placemat 100% LI
TX0196-AMB

37 x 47 cm
[2]

Runner 100% LI
TX0206-AMB

45 x 170 cm
[2]



CHILI PEPPER
Napkin 100% LI
TX0187-CHI

47 x 47 cm
[2]

Placemat 100% LI
TX0197-CHI

37 x 47 cm
[2]

Runner 100% LI
TX0207-CHI

45 x 170 cm
[2]

TABLE DECOR

258 LEATHER

260 NAPKIN RINGS

262 PLACEMATS



Table Decor

A curated selection of authentic table and home decoration accessories



The best ethical accessories, made in Portugal*. All pieces are thoughtfully designed and made of natural and sustainable materials.

Accessories that will provide your table and your home with that extra character you have always wanted.

*Except for horn and wood napkin rings, ethically sourced in India.

Above, left to right: Napkin Rings ecogres collection. Leather collection. Napkin Rings ecogres collection. Napkin Rings horn collection.

LEATHER



All the pieces are vegetable-tanned, one of the oldest and most environmentally-friendly methods of leather tanning. Based on the use of traditional techniques developed over centuries, the vegetable tanning process results in leather with unique features handcrafted to age beautifully and made to last a lifetime.

Vegetable tanned leather. Made in Portugal.



Set 4 Napkin rings

O30356-BRN

D5 H4.5 cm

[1]



Set 4 Napkin rings

O30357-BLS

D5 H4.5 cm

[1]



Leather rect. tray 31

O30204-BRN

30.6 x 25.8 cm

[2]



Leather rect. tray 26

O30205-BRN

25.7 x 14.5 cm

[2]



Leather tray/basket 25

O30206-BRN

25.1 x 16.9 H4 cm

[2]

NAPKIN RINGS



Our handcrafted range of napkin rings will elevate any dining table setting.
Look for a set to match your table.

Recycled and Fine Stoneware: Glossy glaze (interior), unglazed (exterior). Made in Portugal. **Leather:** Vegetable tanned leather. Made in Portugal.
Horn and Wood: Ethically sourced horn and wood. Made in India.

ECOGRES



Set 4 Napkin rings round
1VADS04-WHI
D4.5 H4.6 cm
[1]



Set 4 Napkin rings rect.
1VADS03-WHI
4.7 x 2.7 H2.9 cm
[1]



Set 4 Napkin rings round
VADS04-WHI
D4.5 H4.6 cm
[1]



Set 4 Napkin rings rect.
VADS03-WHI
4.7 x 2.7 H2.9 cm
[1]

HORN



Set 4 Napkin rings round
O30329-GRY
D5 H4.5 cm
[1]



Set 4 Napkin rings round
O30330-CML
D5 H4.5 cm
[1]

LEATHER



Set 4 Napkin rings
O30356-BRN
D5 H4.5 cm
[1]



Set 4 Napkin rings
O30357-BLS
D5 H4.5 cm
[1]

WOOD



Set 4 Napkin rings round spiral*
O30325-NAT
D5 H3.6 cm
[1]



Set 4 Napkin rings round spiral
O30326-DRK
D5 H3.6 cm
[1]



Set 4 Napkin rings square*
O30327-NAT
D5 H3.6 cm
[1]



Set 4 Napkin rings square
O30328-DRK
D5 H3.6 cm
[1]

*Our napkin rings, being crafted from natural wood, may exhibit variations in color, tone, and grain, adding a unique, rustic charm to each piece.

PLACEMATS



This selection of placemats presents exceptionally sustainable solutions. Nótos placemat is crafted from smoked cork, recognized as one of the most eco-friendly materials on the planet. Plano, on the other hand, is made from a blend of recycled EVA (a material made from recycled post-industrial scrap) and cork, offering another eco-conscious choice.

Nótos: Smoked cork. Made in Portugal. **Plano:** Cork/recycled EVA. Made in Portugal.

NÓTOS



Cork placemat 36

O30240-SMK

D36 cm
[12]

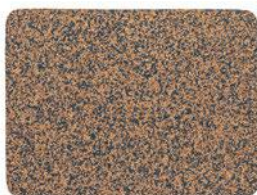
PLANO



**Cork/recycled EVA rect.
placemat 41**

O30221-WBK

41 x 31 H0.4 cm
[6]



**Cork/recycled EVA rect.
placemat 41**

O30358-IND

41 x 31 H0.4 cm
[6]



**Set 4 cork/recycled EVA
round coaster 10**

O30394-WBK

D10 H0.4 cm
[6]



**Set 4 cork/recycled EVA
round coaster 10**

O30395-IND

D10 H0.4 cm
[6]

HOME

268 DECORATIVE

269 BRISA

269 MADEIRA

269 PLANO

270 FESTA

272 RIVIERA

274 BATH

275 BRISA

275 LISBOA

276 PEARL

276 RIVIERA



Home

Elevate your decor with pieces that make a difference, adding a touch of individuality to your space



Our collection features a range of items that enhance your living space, from unique decorative pieces to functional yet stylish home accessories. Each item has been thoughtfully chosen to bring a touch of sophistication and charm to your



surroundings. Explore our selection and transform your home with our authentic and handpicked decorative accessories.

Above, left to right: Brisa vases. Riviera Candles. Riviera trianon pieces. Pearl Bath collection.

DECORATIVE



Our vases are versatile, serving as elegant additions to the table, whether with or without flowers, or as eye-catching decorative items for your shelves. They are a must-have in every home. Our decorative styles, like Brisa and Madeira, infuse your living space with unique character and vibrant glazes. For those seeking sophistication and modernity, Plano offers an austere geometric design with a sustainable twist. To round out this section, we've introduced decorative trees and Riviera's selection of year-round decor items, making it easy to enhance your home's ambiance.

Brisa: Fine stoneware, glossy glaze. Made in Portugal. **Madeira:** Fine stoneware, glossy craquelée glaze. Made in Portugal. **Plano:** Recycled stoneware, glossy glaze (exterior), unglazed (interior). Made in Portugal.

BRISA



Oval vase 20

● VAV201-SAL

● VAV201-RIA

D15.8 H19.6 cm | 220.4 cl
[1]



Oval vase 15

● VAV151-SAL

● VAV151-RIA

D11.7 H14.7 cm | 86.7 cl
[1]

MADEIRA



Cylinder vase 30

NAV301-BLU

D9 H29.9 cm | 150.8 cl
[1]



Cylinder vase 25

NAV251-BLU

D9 H24.7 cm | 106.5 cl
[1]

PLANO



Vase 30

1POV301-WHI

9.2 x 9.1 H29.8 cm | 152.8 cl
[1]

FESTA



Decorative tree 32
1DD321E-WHI

17.9 x 16.7 H31.5 cm
[1]



Decorative tree 26
1TRD261E-WHI

15.3 x 14.3 H25.8 cm
[1]



Decorative tree 21
1CND211E-WHI

11.9 x 11.6 H20.8 cm
[1]

Recycled stoneware, glossy glaze. Made in Portugal.





RIVIERA



Trianon piece 32
DCD321-SBN

D17.5 H32 cm | 86.6 cl
[1]



Trianon piece 25
DCD251-SBN

D13.2 H25.4 cm | 29.9 cl
[1]



Bulb vase 25
VAV251-SBN

D20 H24.9 cm | 446.4 cl
[1]



Diabolo vase 19
DCV191-SBN

18.6 x 7.6 H18.3 cm | 137.7 cl
[1]



Vase/tumbler 10
DCV101-SBN

D8.8 H9.8 cm | 30.9 cl
[4]



Pitcher 165 cl
SLZ281-SBN

D15.2 H27.7 cm | 165 cl
[1]



Pitcher 53 cl
SLZ192-SBN

D8.9 H18.5 cm | 53.2 cl
[1]



Diabolo vase soy wax candle 19
DCV191-BSN

18.6 x 7.6 H18.3 cm | 137.7 cl
[1]



Footed bowl soy wax candle 14
VES141-BTR

D14.1 H8.8 cm | 68.6 cl
[6]



Footed bowl soy wax candle 12
VES121-BTR

D11.6 H7.1 cm | 32.2 cl
[6]



Chalice soy wax candle 12
VED121-BTR

D11.9 H11.9 cm | 54.9 cl
[6]

Riviera: Fine stoneware, matte glaze. Made in Portugal. **Riviera Candles:** Fine stoneware, matte glaze (exterior and interior - BSN), glossy craquelée glaze (interior - BTR). Soy wax, 10% fragrance. Made in Portugal.

BATH



Elevate your bathroom's aesthetic with our exquisite collection of fine stoneware bathroom accessories. Crafted with precision and care, these accessories blend form and function seamlessly. The timeless appeal of fine stoneware not only enhances your bathroom's decor but also ensures durability and longevity.

Brisa: Fine stoneware, glossy glaze. Metal (pump). Made in Portugal. **Lisboa:** Fine stoneware, glossy craquelée glaze. Metal (pump). Made in Portugal.

BRISA



Soap/Lotion pump 11
LND131-RIA

D8 H10.7 cm | 30.4 cl
[1]



Tumbler 9
LNC111-RIA

D7.7 H9.2 cm | 22.9 cl
[1]



Soap dish 15
GOP161-RIA

15.4 x 12 H2.4 cm
[6]



Boutique tissue 15
COX151-RIA

15.3 x 15.2 H15.3 cm
[1]

LISBOA



Soap/Lotion pump 11
COD112-BLT

D8 H10.7 cm | 30.4 cl
[1]



Tumbler 9
DC092-BLT

D7.7 H9.2 cm | 22.9 cl
[1]



Soap dish 13
COR131-BLT

13.1 x 9.5 H2.2 cm
[1]



Boutique tissue 15
COX151-BLT

15.3 x 15.2 H15.3 cm
[1]



Waste basket 25
YCD251-BLT

D21.2 H24.7 cm | 604.2 cl
[1]

PEARL



Soap/Lotion pump 11
PED111-WHI

D9 H11 cm | 37 cl
[1]



Tumbler 10
PEC102-WHI

D9.1 H10.1 cm | 37 cl
[1]



Soap dish 14
PER141-WHI

13.8 x 10 H2.7 cm
[6]

RIVIERA



Soap/Lotion pump 11
DCD111-SBN

D8.7 H10.9 cm | 32 cl
[1]



Vase/tumbler 10
DCV101-SBN

D8.8 H9.8 cm | 30.9 cl
[4]



Hydrangea leaf 17
VEP171-TMT

17.2 x 15 H3.2 cm
[6]



Oval plate 15
GOP162-SBN

15.4 x 12 H2.4 cm
[6]



Oval plate 15
GOP162-VRF

15.4 x 12 H2.4 cm
[6]



Footed bucket 22
VED241-SBN

22.2 x 21.5 H23.8 cm | 608.4 cl
[1]

Pearl: Fine stoneware, glossy glaze. Metal (pump). Made in Portugal. **Riviera:** Fine stoneware, matte glaze (exterior and interior - SBN), glossy craquelée glaze (interior - TMT and VRF). Metal (pump). Made in Portugal.



USE & CARE

FINE STONEWARE

Not all stoneware is created equally. In fact, there is not a standard, universal definition of stoneware and the word is frequently misused to describe other ceramic products.

At our factories in Portugal, the ancient skills of modeling and decorating are combined with modern technology in a special process that produces high-quality fine stoneware products capable of withstanding everyday use over many years. Manufactured in a single firing system heated up to 1180°C (2160°F) our stoneware is very strong and durable. Its glazed surface is fully vitrified which gives it high resistance to both thermal and mechanical shocks.

OVEN, FREEZER AND MICROWAVE SAFE

All pieces manufactured in fine stoneware have high thermal shock resistance, withstanding temperature variations between -20°C and 250°C (0°F to 500°F). The maximum thermal variation advised is 180°C (350°F). All stoneware products can be safely used in the oven, microwave, and freezer. As a precaution, you should avoid placing pieces straight from the oven on a cold surface. Do not use it over a direct flame.

Avoid the use of products with craquelée surfaces such as Elements (Algarve), Lisboa, Madeira, and Riviera in the oven and freezer.

DISHWASHER SAFE

All our pieces are easy to wash and clean and abrasive cleaners can be used without the risk of damaging the surface due to their high durability and low porosity. Most items can be washed daily in the dishwasher. To ensure the items last longer we advise you to make sure that no item rubs or bumps against another during the wash cycle, preventing damage. As a precaution, we recommend you wash oversized items and more delicate pieces by hand.

PVD gold-coated (Riviera) stoneware items: Not oven, microwave and freezer safe. Hand washing recommended.

FOOD SAFE

All Costa Nova products meet the standards established by International Standards including the US Food and Drug Administration (FDA) concerning to lead and cadmium. They are food safe.

CRAFTSMANSHIP

All Costa Nova fine stoneware products are hand-finished which provides them unique character.

Any irregularities, color variations, or small imperfections should be considered defects, but unique marks of authenticity.

ACCESSORIES

FLATWARE

Made from high-quality stainless steel (18/10), all Costa Nova flatware collections are crafted for exceptional durability and sustainable for everyday use. To maintain the original qualities we advise some extra care:

- Remove all the residues after each use, in order to avoid prolonged contact with cutlery pieces;
- For manual washing use hot water, a neutral detergent, and a soft cloth/ sponge;
- Do not use abrasive or mechanical aggressive agents;
- Cutlery should be placed in the dishwasher's basket or tray; knives separate from other cutlery;
- After each dishwasher cycle, it is highly recommended that cutlery must be removed from the basket and well dried with a soft cloth;
- There should be special care with the knives and the blade of hollow handle knives, due to their extra sharpness. As they are more susceptible to oxidation, they should be carefully dried after each wash. We recommend the PVD copper finish pieces.
- In order to recuperate the original shine and remove lasting stains from a lesser quality washing, a soft cloth with drops of lemon juice can be used;
- Special materials and/or special finishings, such as Fibber/Resin or PVD must be washed only in the dishwasher, following the instructions described and also temperature not higher than 60°C/140°F and detergent with less than 10% of phosphates;
- Do not keep Costa Nova flatware in humid places;
- You can rehydrate the resin handles with some rich moisture cream.

Steak/Cheese Knives

Dishwashing is not recommended on knives with a wood handle. Wash after each use with a non-abrasive sponge. Dry with a soft towel to avoid corrosion and spots.

GLASSWARE

Made in Europe, our glassware collections are either made of pressed-glass, our mouth-blown glass using semi-manual methods. Wine glasses, water glasses and tumblers from can be safely used in the dishwasher. However, hand washing will prolong the life of the products. To maintain the original qualities we advise some extra care:

- Before placing glasses in the dishwasher it is advisable to rinse them in lukewarm water to eliminate any residues;
- Washing glassware by hand: handwash glasses individually with a non-abrasive detergent, warm water, and a soft sponge or cloth;
- In the dishwasher: place glasses in the appropriate rack to avoid scratches. The washing temperature for the dishwasher should be 65°C (140°F) with a rinsing phase at 65°C (149°F) and a washing cycle of approximately 90/120 seconds. Carefully dose the brightener, an excess amount may cause iridescence on the glass surface, and a poor amount leaves water drop marks on the bowl. At the end of the washing program, open the door and leave it ajar for 5/10 minutes to vent steam and avoid the formation of halos on the glass due to condensation;
- Dry with a microfiber cloth.

We recommend you wash oversized items and more delicate pieces by hand, namely our bourdeaux/burgundy/chardonay glasses, our decanters, glass domes, and all items from our recycled glass collection Tosca.

TABLE LINENS

Made in Portugal from the best natural fibers, all our table linens collections are easy to use and care. They can be machine washed up and ironed according to the specifications of each fabric.

LEATHER

Handcrafted in Portugal, our leather accessories are vegetable-tanned, one of the oldest and environmentally-friendly methods of leather tanning. This process results in leather with unique features: handcrafted to age beautifully and made to last a lifetime.

Wipe clean with a damp cloth. For maintenance, occasionally rub appropriate oil.

CORK & CORK/RECYCLED EVA

Our cork accessories are made either of 100% cork (Nótos and Redonda collections) or made of 20% cork/ 80% recycled EVA (Plano collection).

Recycled EVA is a subproduct that comes from the waste of soles production and is reused for other purposes - recycled and eco-friendly.

For daily cleaning we recommend using a soft, dry cloth to remove impurities; when necessary you may use a moistened cloth. Do not soak. Store protected from sunlight, moisture, and heat sources. Avoid strong alkalis (it dissolves cork). Although food contact is safe, please avoid smoke odor and taste transfer. Do not place food directly. Made in Portugal.

WOODEN ACCESSORIES

Our wooden accessories are handcrafted in Portugal from premium quality woods. Natural variations in the wood's tone and grain make each piece unique. Handwashing is highly recommended. Wipe the wood pieces with a damp cloth. Do not soak. You can use mild dish detergent when necessary. To maintain the original qualities of all pieces, occasionally rub them with food-safe mineral oil. Use the boards and boxes for dry food only.

Each item will need re-treating over time with a food-safe wood wax or oil to keep them looking their best. It is best to avoid using olive oil as it can go rancid. Walnut oil, flaxseed, coconut oil, and linseed oil are all good to use and are readily available.

Never put wooden accessories in the dishwasher or leave them soaking in water. If prolonged contact with water occurs the edges may go a little fuzzy when it is dry. Using the fine-grit sandpaper lightly sand down until smooth and keep well moisturised with a wood oil or wax.

OTHER ACCESSORIES

Our metallic accessories are made in Portugal in painted metal. When necessary, we recommend cleaning them with a moistened cloth. We do also recommend cleaning the horn napkin rings with a moistened cloth.

Lagoa tea pot infusers are made of 18/10 Stainless steel. The fine mesh shape creates the ideal leaf free infusion.

This is a dishwasher safe item. However, hand washing is recommended. Rinse filter immediately after use to remove tea leaves, then wash as soon as possible after use. Do not use hard or improper cleaning agents. Dry immediately after washing and store in a dry environment.

Lagoa's tea pot handle are made of 18/10 stainless steel with a black finish.

CUIDADOS DE UTILIZAÇÃO

GRÉS FINO

Nem todo o grés é produzido segundo a mesma filosofia. Na realidade, não existe uma definição clara e universal que caracterize o grés pelo que a designação é habitualmente utilizada de forma inadequada para descrever outro tipo de produtos cerâmicos. Todos os nossos produtos são fabricados em grés fino a partir dos melhores recursos naturais existentes em Portugal num sistema de monocedura a alta temperatura (1180°C). Esta fórmula original cria uma superfície vitrificada resistente aos choques térmicos e mecânicos, ao fendilhamento e ao uso diário.

FORNO, CONGELADOR E MICROONDAS

Todas as peças produzidas em grés fino possuem elevada resistência ao choque térmico, suportando variações de temperatura entre os - 20°C e os 250°C (a variação térmica máxima aconselhada é de 180°C). Podem ser usadas no forno, micro-ondas e congelador. Por precaução, não aconselhamos colocar peças retiradas do forno em contacto direto com uma superfície fria. Não colocar as peças diretamente sobre uma chama ou chapa. Evitar o uso de peças com superfície craquelé como as das coleções Elements (Algarve), Lisboa, Madeira e Riviera no forno e congelador.

LAVAGEM

Todas as nossas peças são fáceis de lavar e de limpar, podendo usar-se produtos de limpeza mais abrasivos sem o risco de danificar a superfície devido à sua elevada durabilidade e baixa porosidade. A maioria das peças podem ser usadas diariamente na máquina de lavar loiça, tendo o cuidado de se certificar de que nenhuma peça está em contacto com outra durante o ciclo de lavagem, evitando danos. Por precaução, aconselhamos a lavagem manual das peças maiores e mais delicadas.

Artigos em grés e revestidos a PVD dourado (Riviera): Não devem ser utilizadas no forno, micro-ondas e congelador. Recomenda-se lavagem manual.

SEGURANÇA ALIMENTAR

Todos os produtos Costa Nova estão em conformidade com as normas internacionais que regulam os artigos que entram em contacto com os alimentos. Não contêm cádmio nem chumbo.

AUTENTICIDADE – TRABALHO ARTESANAL

Todos os nossos produtos são acabados à mão o que lhes confere um carácter único e autêntico. Pequenos aspetos irregulares ou imperfeições e ligeiras variações de cor que poderá encontrar não são considerados defeitos, mas sinónimo da sua autenticidade.

ACESSÓRIOS

CUTELARIAS

Produzidos em aço inoxidável de alta qualidade (18/10), os faqueiros Costa Nova são desenhados de forma a garantir a sua durabilidade e uso diário nas mais diversas circunstâncias. Com alguns cuidados manterão o seu estado original por mais tempo:

- Após cada utilização deve remover os resíduos de alimentos de modo a evitar o contacto prolongado com os talheres;
- Na lavagem manual utilize água quente, um detergente neutro e uma esponja macia ou pano macio;
- Na lavagem à máquina deve evitar detergentes abrasivos;
- Os talheres devem ser colocados no cesto da máquina com o cabo voltado para baixo, separando as facas dos restantes talheres;
- Os talheres Costa Nova não devem ser lavados em contacto com outros objetos metálicos;
- Deve ter um cuidado especial com as lâminas das facas que, devido ao seu elevado poder de corte, são mais sensíveis à oxidação, pelo que devem ser secas após cada lavagem;
- Após cada lavagem é altamente recomendado que os talheres sejam retirados e imediatamente secos com um pano suave;
- Para recuperar o brilho original e remover manchas decorrentes de uma lavagem deficiente, pode utilizar um pano macio com umas gotas de sumo de limão;
- Não guarde os talheres Costa Nova em locais húmidos;
- A cutelaria Costa Nova com materiais ou acabamentos especiais, nomeadamente Fibra/Resina ou PVD, deve ser unicamente lavada em máquina de lavar, seguindo as condições acima descritas acrescidas de temperaturas não superiores a 60°C e a utilização de detergentes com teor igual ou inferior a 10% de fosfatos;
- As peças com acabamentos em cobre, devido à presença de cobre na composição do banho, devem ser imediatamente secas após a lavagem e nunca devem ser deixadas dentro da máquina de lavar;
- As peças com cabo em fibra/resina, no sentido de reavivar a sua cor natural, podem ser hidratadas no cabo, com um creme gordo.

Facas de Bife/Queijo

A lavagem na máquina de lavar loiça não é recomendada em facas com cabo de madeira. Lave as suas facas após cada utilização com uma esponja não abrasiva. Seque com uma toalha macia para evitar corrosão e manchas.

ARTIGOS EM VIDRO

De fabrico europeu, as nossas coleções de copos apresentam uma variedade de métodos semi-manuais, desde vidro prensado a vidro soprado. Todos os copos de vinho, copos de água e tumblers são próprios para máquina de lavar a loiça. No entanto, a lavagem manual irá prolongar a longevidade dos artigos.

- Lavagem manual: use um detergente não abrasivo, água morna e uma esponja macia ou pano macio;

- Na máquina de lavar a loiça: lave separadamente de outros artigos cerâmicos e cutelarias. Certifique-se de programar a máquina para uma lavagem a baixa temperatura e utilize uma grelha adequada para a lavagem dos copos;

- Secagem: após a lavagem, deixe os copos secarem numa posição vertical; uma vez secos, use um pano próprio para vidros de forma a remover as marcas de água.

Aconselhamos a lavagem manual das peças de vidro maiores e mais delicadas, nomeadamente os nossos copos bordeaux/burgundy/chardonay, os nossos decanters, as nossas campânulas de vidro e todos os artigos da nossa coleção de vidro reciclado Tosca.

TÊXTEIS DE MESA

Fabricados em Portugal com as melhores fibras naturais, todos os nossos têxteis de mesa são fáceis de usar e cuidar. Todos os artigos podem ser lavados e engomados de acordo com as especificações de cada tecido.

ARTIGOS EM CABEDAL

Manufaturados em Portugal, os nossos acessórios em pele com curtimento vegetal, um dos métodos de curtimento mais antigos e ecológicos. Este processo artesanal é o único capaz de dar características únicas e uma enorme longevidade a cada peça: o seu aspeto altera-se e melhora ao longo dos anos. Limpe as suas peças em pele com um pano húmido. Para manutenção, esfregue-as ocasionalmente com um óleo apropriado.

ARTIGOS EM CORTIÇA

Os nossos acessórios de cortiça são feitos em 100% cortiça (coleções Nótos e Redonda) ou de 20% cortiça/80% EVA reciclado (coleção Plano).

O EVA reciclado é um subproduto proveniente dos resíduos da produção de solas solados e que é reutilizado para outras finalidades - reciclado e sustentável. Para a limpeza diária destes artigos recomendamos a utilização de um pano macio e seco para remover as impurezas; quando necessário, pode utilizar um pano humedecido. Não os submersa em água. Armazene-os protegidos da luz solar, humidade e fontes de calor. Evite álcalis fortes (dissolvem a cortiça). Embora o contato com alimentos seja seguro, evite colocar alimentos diretamente sobre estas superfícies. Fabricados em Portugal.

ACESSÓRIOS EM MADEIRA

Os nossos acessórios de madeira são feitos à mão em Portugal a partir de madeiras de elevada qualidade premium. As variações naturais encontradas na cor e no grão da madeira tornam cada peça única.

A lavagem manual deste artigos é altamente recomendada. Limpe-os com um pano húmido. Não os submersa em água. Não desmere. Pode utilizar um detergente suave quando necessário. Para manter as qualidades originais de todas as peças, esfregue-as ocasionalmente com óleo mineral seguro para alimentos. Utilize as tábuas e as caixas de madeira apenas para alimentos secos.

OUTROS ACESSÓRIOS

Os nossos acessórios metálicos são fabricados em Portugal em metal pintado. Quando necessário, pode limpá-los com um pano humedecido. Recomendamos também a limpeza das argolas de guardanapo em chifre com um pano humedecido.

Os infusores de chá da coleção Lagoa são produzidos em aço inoxidável 18/10. A sua malha fina cria uma infusão sem passagem de folhas.

Este é um artigo válido para a máquina de lavar louça. No entanto, recomendamos a sua lavagem à mão. Enxague o filtro imediatamente após a utilização para remover as folhas de chá e lave-o em seguida com um detergente suave. Seque o infusor imediatamente após a lavagem e guarde-o num ambiente seco.

A pega metálica do bule da coleção Lagoa é produzida em aço inoxidável 18/10, com um acabamento preto.

STONEWARE

COLLECTION	OVEN SAFE	MICROWAVE SAFE	FREEZER SAFE	DISHWASHER SAFE	HAND WASHING RECOMMENDED
ALENTEJO	X	X	X	X	
ARENITO	X	X	X	X	
APARTE	X	X	X	X	
AUGUSTA	X	X	X	X	
BEJA	X	X	X	X	
BRISA	X	X	X	X	
CRISTAL	X	X	X	X	
ELEMENTS	X	X	X	X	
FESTA	X	X	X	X	
FRISO	X	X	X	X	
GRESPRESSO	X	X	X	X	
GRESPRESSO ECOGRES	X	X	X	X	
GRESPRESSO NATURE	X	X	X	X	
LAGOA	X	X	X	X	
LAGOA ECOGRES	X	X	X	X	
LATTE BOWLS	X	X	X	X	
LISBOA				X	
LIVIA	X	X	X	X	
LUZIA	X	X	X	X	
MADEIRA		X		X	
MARRAKESH	X	X	X	X	
NÓTOS	X	X	X	X	
NOVA	X	X	X	X	
PEARL	X	X	X	X	
PLANO	X	X	X	X	
REDONDA	X	X	X	X	
RIVIERA		X		X	
RODA	X	X	X	X	
ROSA	X	X	X	X	
STACKED ORGANIC	X	X	X	X	
BATH COLLECTION					X

NAPKIN RINGS

COLLECTION	DISHWASHER SAFE	CLEAN WITH CLOTH
ECOGRES	X	
FINE STONEWARE	X	
HORN		X
LEATHER		X
WOOD		X

FLATWARE

COLLECTION	DISHWASHER SAFE	HAND WASHING RECOMMENDED
ANTIGO	X	
CHEESE KNIVES		X
LUMI	X	
MITO	X	
NAU	X	
PICO	X	
PRADO	X	
SAGA	X	
STEAK KNIVES		X

GLASSWARE

COLLECTION	DISHWASHER SAFE	HAND WASHING RECOMMENDED
ALICE	X	
AROMA	X	
BAGA	X	
COUPOLE		X
ESPIRAL	X	
GOMO		X
GOMOS	X	
LISO		X
MAR	X	
NOVA	X	
SAFRA	X	
TINTA		X
TOSCA		X
VINE	X	
VITE		X

TABLE LINENS

COLLECTION	MACHINE WASH UP TO	DO NOT BLEACH	TUMBLY DRY LOW	IRON UP TO	DO NOT DRY CLEAN
BELLA	40°C/104°F	X	X	110°C/230°F	X
CARMO	60°C/140°F	X		220°C/392°F	
CASCATA	40°C/104°F	X	X	150°C/300°F	X
DENIM	40°C/104°F	X	X	110°C/230°F	X
LUISA	40°C/104°F	X	X	110°C/230°F	X
MARIA	40°C/104°F	X	X	110°C/230°F	X

FLATWARE DIMENSIONS CHART

COLLECTION	PAGE	PRODUCT DESCRIPTION	DIMENSIONS CM	WEIGHT GR
ANTIGO	210	Table knife	24.6 T1.1 cm	68 g
ANTIGO	210	Table fork	20.3 T0.3 cm	55 g
ANTIGO	210	Table spoon	20.6 T0.3 cm	70 g
ANTIGO	210	Dessert knife	20.8 T1 cm	56 g
ANTIGO	210	Dessert fork	17.7 T0.25 cm	33 g
ANTIGO	210	Dessert spoon	17.9 T0.25 cm	43 g
ANTIGO	210	Fish knife	20.3 T0.25 cm	38 g
ANTIGO	210	Fish fork	17.7 T0.25 cm	34 g
ANTIGO	210	Tea spoon	13.6 T0.2 cm	20 g
ANTIGO	210	Coffee spoon	11.3 T0.2 cm	14 g
ANTIGO	210	Serving spoon	23.7 T0.3 cm	96 g
ANTIGO	210	Cake server	24.7 T0.3 cm	78 g
ANTIGO	210	Sauce spoon	18.6 T0.3 cm	70 g
ANTIGO	210	Salad fork	20.1 T0.3 cm	60 g
ANTIGO	210	Salad spoon	20.3 T0.3 cm	66 g
CHEESE KNIVES	212	Pronged cheese knife	9 cm	36 g
CHEESE KNIVES	212	Parmesan cheese knife	7 cm	38 g
CHEESE KNIVES	212	Gorgonzola cheese knife	7 cm	43 g
LUMI	214	Table knife	24.6 T1.1 cm	80 g
LUMI	214	Table fork	20.9 T0.4 cm	61 g
LUMI	214	Table spoon	20.6 T0.4 cm	80 g
LUMI	214	Dessert knife	20.8 T1 cm	57 g
LUMI	214	Dessert fork	17.7 T0.3 cm	33 g
LUMI	214	Dessert spoon	17.6 T0.3 cm	44 g
LUMI	214	Fish knife	20 T0.3 cm	38 g
LUMI	214	Fish fork	18.2 T0.3 cm	39 g
LUMI	214	Tea spoon	13.6 T0.25 cm	24 g
LUMI	214	Coffee spoon	12 T0.25 cm	14 g
LUMI	214	Serving spoon	25.2 T0.4 cm	96 g
LUMI	214	Cake server	24.3 T0.4 cm	78 g
LUMI	214	Salad fork	24.6 T0.4 cm	66 g
LUMI	214	Salad spoon	24.6 T0.4 cm	90 g
MITO	216	Table knife	22.1 T0.8 cm	26 g
MITO	216	Table fork	21.5 T0.6 cm	30 g
MITO	216	Table spoon	21.2 T0.6 cm	43 g
MITO	216	Dessert knife	18.6 T0.8 cm	15 g
MITO	216	Dessert fork	17.4 T0.8 cm	23 g
MITO	216	Dessert spoon	16.6 T0.5 cm	29 g
MITO	216	Fish knife	22 T0.6 cm	35 g
MITO	216	Fish fork	21.5 T0.6 cm	29 g
MITO	216	Tea spoon	13.4 T0.4 cm	14 g

FLATWARE DIMENSIONS CHART

COLLECTION	PAGE	PRODUCT DESCRIPTION	DIMENSIONS CM	WEIGHT GR
MITO	216	Coffee spoon	11.8 T0.4 cm	14 g
MITO	216	Chopstick set (2p.)	22.9 T0.55 cm	30 g
MITO	216	Salad fork	26.5 T0.6 cm	65 g
MITO	216	Salad spoon	26.5 T0.6 cm	70 g
NAU	218	Table knife	24.5 T1.1 cm	100 g
NAU	218	Table fork	20.3 T0.35 cm	64 g
NAU	218	Table spoon	20.6 T0.35 cm	78 g
NAU	218	Dessert knife	20.7 T1.1 cm	74 g
NAU	218	Dessert fork	17.7 T0.3 cm	42 g
NAU	218	Dessert spoon	17.9 T0.3 cm	51 g
NAU	218	Fish knife	20.3 T0.3 cm	45 g
NAU	218	Fish fork	17.7 T0.3 cm	40 g
NAU	218	Tea spoon	13.6 T0.25 cm	25 g
NAU	218	Coffee spoon	11.3 T0.25 cm	18 g
NAU	218	Serving spoon	23.7 T0.35 cm	101 g
NAU	218	Cake server	24.7 T0.35 cm	85 g
NAU	218	Salad fork	20.3 T0.35 cm	71 g
NAU	218	Salad spoon	20.3 T0.35 cm	71 g
PICO	220	Table knife	23.5 T0.8 cm	26 g
PICO	220	Table fork	22 T0.8 cm	30 g
PICO	220	Table spoon	22 T0.8 cm	43 g
PICO	220	Dessert fork	17.4 T0.8 cm	23 g
PICO	220	Dessert spoon	17.4 T0.8 cm	23 g
PICO	220	Tea spoon	13.4 T0.6 cm	14 g
PICO	220	Salad spoon	20.3 T0.35 cm	71 g
PICO	220	Salad fork	20.3 T0.35 cm	71 g
PRADO	222	Table knife	23 T0.8 cm	106 g
PRADO	222	Table fork	20.6 T0.3 cm	50 g
PRADO	222	Table spoon	20.6 T0.3 cm	66 g
PRADO	222	Dessert knife	20 T0.75 cm	72 g
PRADO	222	Dessert fork	17.5 T0.25 cm	36 g
PRADO	222	Dessert spoon	17.5 T0.75 cm	44 g
PRADO	222	Fish knife	20.6 T0.25 cm	52 g
PRADO	222	Fish fork	17.5 T0.25 cm	40 g
PRADO	222	Tea spoon	11.7 T0.18 cm	20 g
PRADO	222	Coffee spoon	10.2 T0.18 cm	16 g
PRADO	222	Cake Server	24.5 T0.3 cm	84 g
PRADO	222	Serving spoon	23.7 T0.3 cm	102 g
PRADO	222	Salad spoon	20.4 T0.3 cm	74 g
PRADO	222	Salad fork	20.4 T0.3 cm	68 g
SAGA	224	Table knife	23.5 T1.1 cm	104 g
SAGA	224	Table fork	20 T0.25 cm	53 g

FLATWARE DIMENSIONS CHART

COLLECTION	PAGE	PRODUCT DESCRIPTION	DIMENSIONS CM	WEIGHT GR
SAGA	224	Table spoon	20 T0.25 cm	70 g
SAGA	224	Dessert knife	20.6 T1 cm	68 g
SAGA	224	Dessert fork	15.6 T0.18 cm	24 g
SAGA	224	Dessert spoon	15.5 T0.18 cm	28 g
SAGA	224	Fish knife	20.6 T0.22 cm	33 g
SAGA	224	Fish fork	20.6 T0.22 cm	39 g
SAGA	224	Tea spoon	13.2 T0.18 cm	21 g
SAGA	224	Coffee spoon	10.7 T0.18 cm	18 g
SAGA	224	Serving spoon	23 T0.25 cm	112 g
SAGA	224	Sauce spoon	20.2 T0.25 cm	73 g
SAGA	224	Salad fork	25 T0.25 cm	102 g
SAGA	224	Salad spoon	25 T0.25 cm	102 g
STEAK KNIVES	212	Rosewood steak knife	23.3 cm	60 g
STEAK KNIVES	212	Maple steak knife	23 cm	72 g

Flatware dimensions are presented as follows: length and thickness.

INSTRUCTION GUIDE

Follow these instructions to correctly read the product technical specifications in this catalogue.
Use the SKU reference to place your order.

STONEWARE



**Product
Description**

SKU (REFERENCE)

Length, width and height in centimetres
Pack



**Product
Description**

SKU (REFERENCE)

Diameter, height in centimetres | capacity in centiliters
Pack

FLATWARE



**Product
Description**

SKU (REFERENCE)

Set composition
Pack

GLASSWARE



**Product
Description**

SKU (REFERENCE)

Diameter, height in centimetres | capacity in centiliters
Pack

B2B PLATFORM PRO.COSTANOVA.PT

Create your account to access our B2B e-Shop where you can easily order our products anytime, anywhere and on any device. Request your login via access form available at www.costanova.com (footer).

Crie a sua conta para aceder à nossa plataforma B2B E-Shop onde poderá encomendar facilmente os nossos produtos, 24 horas por dia, sete dias por semana e em qualquer dispositivo. Solicite o seu login através do formulário de acesso disponível em www.costanova.com (rodapé).







CONTACTS

HEAD OFFICE PORTUGAL

Zona Industrial de Vagos, Lote 78
3840-385 Vagos, Portugal

Phone: +351 234 798 132
E-mail: info@costanova.pt

US OFFICE

301 Fields Lane,
Brewster, NY 10509, USA

Phone: (845)277-5700
E-mail: office@costa-nova.com

WEBSITE

www.costanova.com

B2B PLATFORM

pro.costanova.pt

SOCIAL MEDIA

[@costanovatableware](https://www.instagram.com/costanovatableware)





COSTA NOVA
PORTUGAL

C O S T A N O V A . C O M